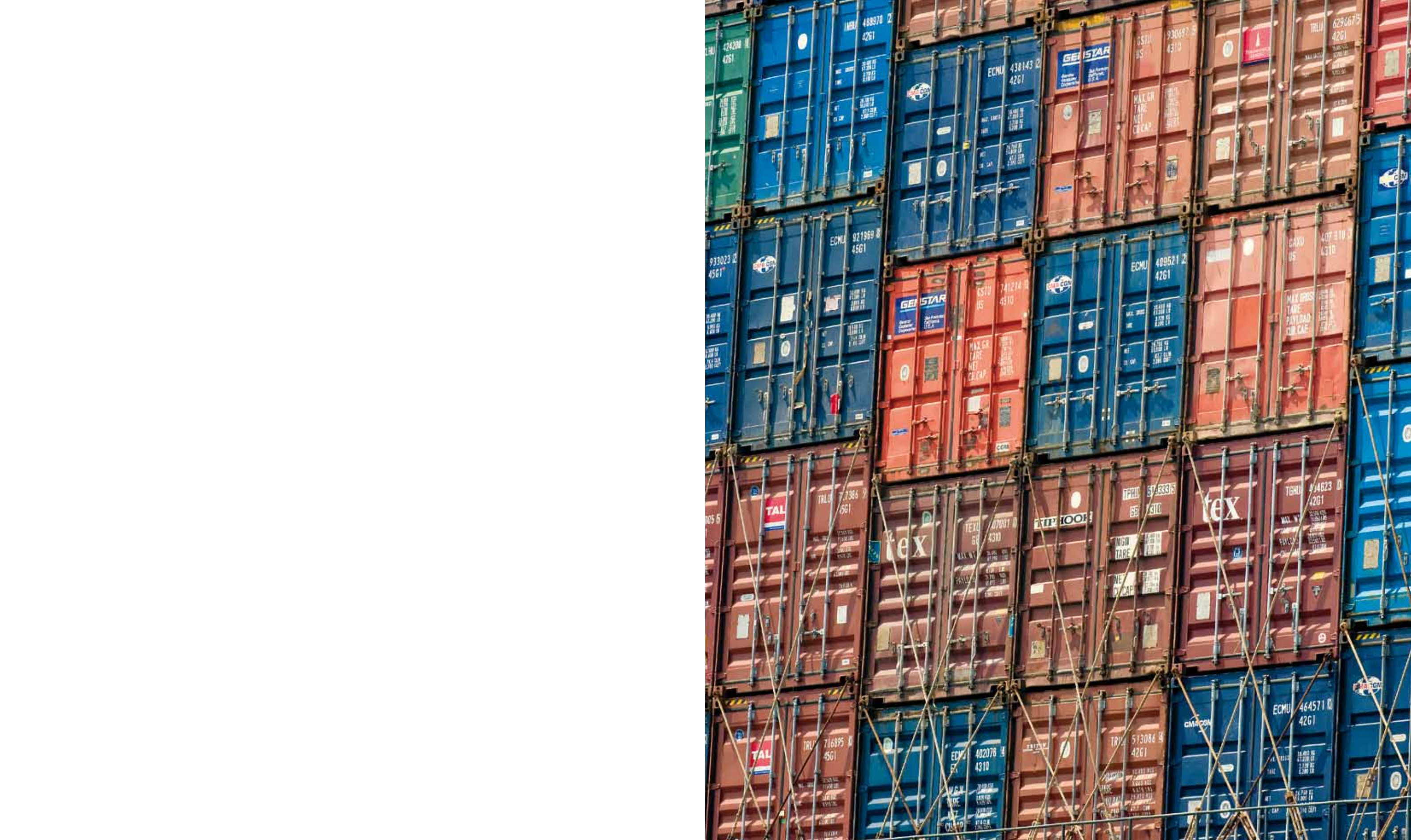




PORT OF RIJEKA AUTHORITY

2013





With each day we get closer to attainment of Port Authority's plans, main goal of which was to competitively position Rijeka port and to create prerequisites for concessionaires' successful work in encouraging environment. Numerous indicators confirm that we are on the right path.

With Croatia's accession to the EU, Rijeka becomes the first port of call of the Union in north Adriatic. Rijeka Gateway thus becomes the intersection for merchandise traffic from Far East towards Central Europe. This points the crucial part of Rijeka port in national traffic strategy. Geostrategic position in which Adriatic Sea goes furthest into European continent makes Rijeka the most eligible natural link to Central European markets. Two industrial worlds, one being European markets and the other being modern Asian/Eastern markets, meet at this appropriate location. In Port of Rijeka Authority we are doing everything and we will continue to do everything to improve our offer, not only in port transshipment and storage possibilities, but also in business segment where our imperative is concessionaires' success, as well as the setting of ideal route for shipping companies towards Central European markets.



Port of Rijeka Authority can undoubtedly say that we established an efficient way of execution of development infrastructural projects with our concessionaires, and that investments undertaken so far are a crucial result of successful execution of concessions system based on Croatia's positive regulations.

The basic precondition of Rijeka port's development is good cooperation, compliance with contractual obligations and acceptance of identity of business objectives of all concessionaires, business partners and direct port community, in accordance with development vision fostered by Port of Rijeka Authority. For that reason, Port of Rijeka Authority can draw attention of potential investors to exceptional opportunity to continue economic development.

Finally, we have reasons for optimism and faith in future successes which shall be accomplished by investments into development projects and application of contemporary technology, all with continuous effort to follow modern achievements in the world of transport and logistics.

We are especially joyous about our concessionaires' results. That is a sign that we are aware of our economic influence and that we nurture the values of international business and entrepreneurship.

Vlado Mezak, Ph.D.
Executive Director, Port of Rijeka Authority



PORT OF RIJEKA AUTHORITY

Port of Rijeka Authority was established in 1996 as the first port authority in Croatia. Management and planning of strategic development of Rijeka port are Port Authority's main activities, while all economic activities have been taken over by concessionaires, i.e. private companies, in line with transition of Croatian economic system towards market economy. Rijeka port is open for public traffic, and due to its size and significance it has been declared a port of special interest for the Republic of Croatia. This change had a positive impact on our business, during which many successful projects have been implemented such as Samsung – equipment of container and bulk cargo terminals and many components of Rijeka Gateway Project.

Port Authority's main objectives, apart from managing port area (at four different locations), are visible from planning strategic development, modernization and increase of competitiveness of Rijeka port. Unique and motivating objective which is to be achieved by finishing Rijeka Gateway Project is strengthening of Rijeka port competitiveness and of Rijeka economy as a whole. In order to really achieve those goals, a series of valuable international projects has been launched, along with joining trade associations such as NAPA (North Adriatic Ports Association), MedCruise, ESPO, EcoPorts, IAPH, EIA, IACP and others. Being a member of these associations facilitates communication and is useful for creating port policy and long-term development strategy.



STRATEGIC POSITION OF RIJEKA PORT

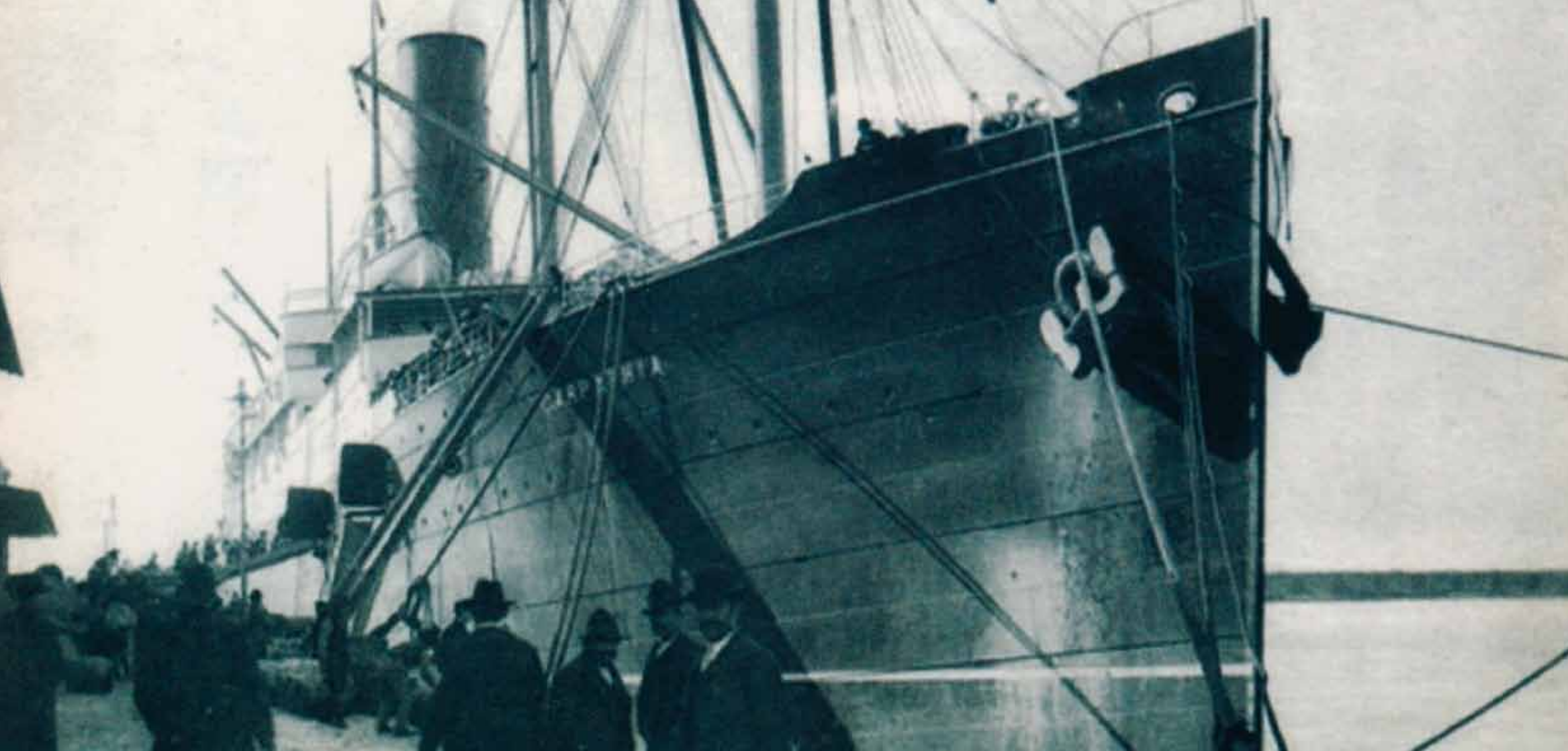
Rijeka is located in northernmost part of Kvarner bay, in a place where the Mediterranean Sea goes furthest into European continent. What makes this position ideal is a well protected, 70 m deep bay which guarantees Europe a significantly shorter route (2000 Nm) towards Middle and Far East, compared to Baltic and Northern Sea ports.

Due to its position, Rijeka port represents the most favourable gateway to sea to Croatia, Hungary, Austria, Czech Republic, Slovakia, Serbia, Bosnia and Herzegovina, west Ukraine, south Poland and south Germany.

Traffic connection guarantees a quick and safe transport, therefore projects of revitalization of road and railway routes are underway in that regard.



Total turnover in Rijeka port in 2012 amounted to **8.554.001 tons**; 4.042.771 tons refer to liquid cargo (crude oil and derivates), while 4.551.230 tons refer to reloading dry cargo (general and bulk, containers and timber).



HISTORICAL POSITION OF RIJEKA PORT

Since its real commercial development in 18th century until today, Rijeka port has always been the most strategically important port for all countries it pertained to. Thus, in 1719 Austro-Hungarian Emperor Charles VI awarded free port status to Rijeka, initiating a rapid rise of Rijeka's industry and trade. As the main Hungarian port, Rijeka port and therefore Rijeka too, experienced a growth which was a result of construction of 1.750 m long breakwater. This created an ample area of 52 acres.

Construction of railway to Budapest was finished before World War I, which provided Rijeka port with endless opportunities. At the time the port achieved the turnover of 2,1 million tons, thus becoming one of 10 largest ports in Europe.

This historical fact inspires Port of Rijeka Authority today and it justifies our efforts to participate in revitalization of the port and to restore the status Rijeka port deserves, after a series of adverse political and social periods in the last century.



MODERN POSITION OF RIJEKA PORT CO-PETITION (COOPERATION AND COMPETITIVENESS)

Main motivation of Port of Rijeka Authority lies in lifting general organizational ability and achieving goals which mirror in successful monitoring of investment projects, increase of investments in quality and modernization, with the purpose of improvement of competitiveness of Rijeka port and gateway. Inclusion in international activities represents readiness to participate in numerous projects of improvement of traffic infrastructure, as a mode of further development of Rijeka port, both economic and social.

By signing accession treaty in late 2010 Port of Rijeka Authority became a member of NAPA (North Adriatic Ports Association), joining Venice, Trieste and Koper.

Many projects of cooperation and promotion of North Adriatic ports are conducted under NAPA association, one of them being "ITS Adriatic multi-port gateway". This project was supported by the European Commission, who assessed it as extremely important project for potential of port infrastructures and services for European markets. This project was also financed with 1.442.500 EUR from EU's public bid for co-financing development projects in TEN-T fund (Trans-European Transport Network). Realization of this project foresees the creation of common IT platform with the purpose of exchange of common interest data, as well as better commercial efficiency of port capacities.

Port of Rijeka Authority actively participates in other international associations. In 2008 Port of Rijeka Authority joined MedCruise association (Association of Mediterranean Cruise Ports). As a part of three-year mandate we actively participate in association's Board of Directors. MedCruise supports its members, therefore Rijeka too, in many promotion and expert activities so that the existing tourist potentials can be used more efficiently.



SUSTAINABLE DEVELOPMENT

Port of Rijeka Authority recognized sustainable development as one of basic elements of management and a necessary prerequisite of economic growth and development, along with unavoidable transformation of Rijeka port as highly efficient port centre.

By promoting sustainable development through implementation of Environmental management system in port area, Port of Rijeka Authority insures that environment protection requirements are incorporated into all plans and activities of port development.

Port of Rijeka Authority is a partner of ESPO/EcoPorts, an association of European ports which jointly promote environment protection and sustainable development along with exchange of knowledge, experience and examples of good practice.

Additional improvements, procedures and criteria are introduced into business operations, in order to achieve the set goal – gaining environmental protection certificate.

The port operates with International Ship and Port Facility Security (ISPS) Code. Supervision of handling hazardous substances in the port and certain port areas is conducted in accordance with domestic regulations and International Maritime Dangerous Goods (IMDG) Code.

With new system of supervision of maritime activities in port area, system of supervision of movement by ID cards, and international supervision of execution of current and future works, Port of Rijeka Authority guarantees high quality security standards, which is proven by ISO 9001 certificate.



VISION

As Croatia's leading port, Rijeka port shall become the largest container port in the region, and one of the most important ports for connecting Far East and Central Europe, with special emphasis on environment care, security of ships and port areas, as well as responsible business and cooperation with local community.

Rijeka port is developing as south route for Central European market with a status of new, powerful, competitive and safe Mediterranean port, intended for traffic of goods as well as the traffic of passengers.



MEMBERSHIPS IN ASSOCIATIONS

Croatian Association of Port Authorities

Members are: Port of Rijeka Authority, Port of Zadar Authority, Port of Šibenik Authority, Split Port Authority, Port of Ploče Authority and Dubrovnik Port Authority.

Development and cooperation within this association is one of important national interest issues. Level of development of each port within Croatian port system effects the development on the economy and vice versa. Establishment of Croatian Association of Port Authorities enabled the creation of economic and legal foundation for development of national port system and ports within that system.

IAPH (International Association of Ports and Harbours)

The main objective of this association is development and maintenance of good relations between all world ports, and an opportunity to exchange opinions and experiences on latest events and port management. IAPH aspires to promote the fact that ports are a vital link of land and sea gateways, thus playing an important role in today's global economy.

IACP (Association Internationale Villes et Ports)

The association was founded in 1998 at initiative of cities, ports and their institutional and economic partners, who wanted to establish a stable structure for exchange of information and contacts, in order to realise projects mostly related to urban development of port areas. The City of Rijeka is also a member of this association.

EIA (European Intermodal Association)

First European association open to all means of transport: rail, road, sea, water and air. The purpose of this association is to improve cooperation between different transport types, in order to neutralize possible shortcomings in logistic chain, in infrastructural, technical, organizational and legal aspect.

ESPO (European Sea Ports Organization)

This association represents port authorities, port organizations and port administrations of sea ports in EU member states and Norway. ESPO also has observer members in several EU neighbouring countries.

ESPO makes sure sea ports have a representing voice in the EU. The organization promotes common interests of all of its members throughout Europe. It actively participates in dialogue with European interest groups in port and maritime sector.



ESPO / EcoPorts

Environmental protection has always been one of ESPO's priorities. A strong connection between efficient environment management and port management has been recognized. As of 2011, EcoPorts (founded in 2004) is completely integrated into ESPO structure.

EcoPorts has gathered a network of experts from several European ports, universities, research institutions and expert organizations which, through exchange of knowledge, experience and examples of good practice, actively cooperate and try to implement improvements in environmental protection and sustainable development fields.

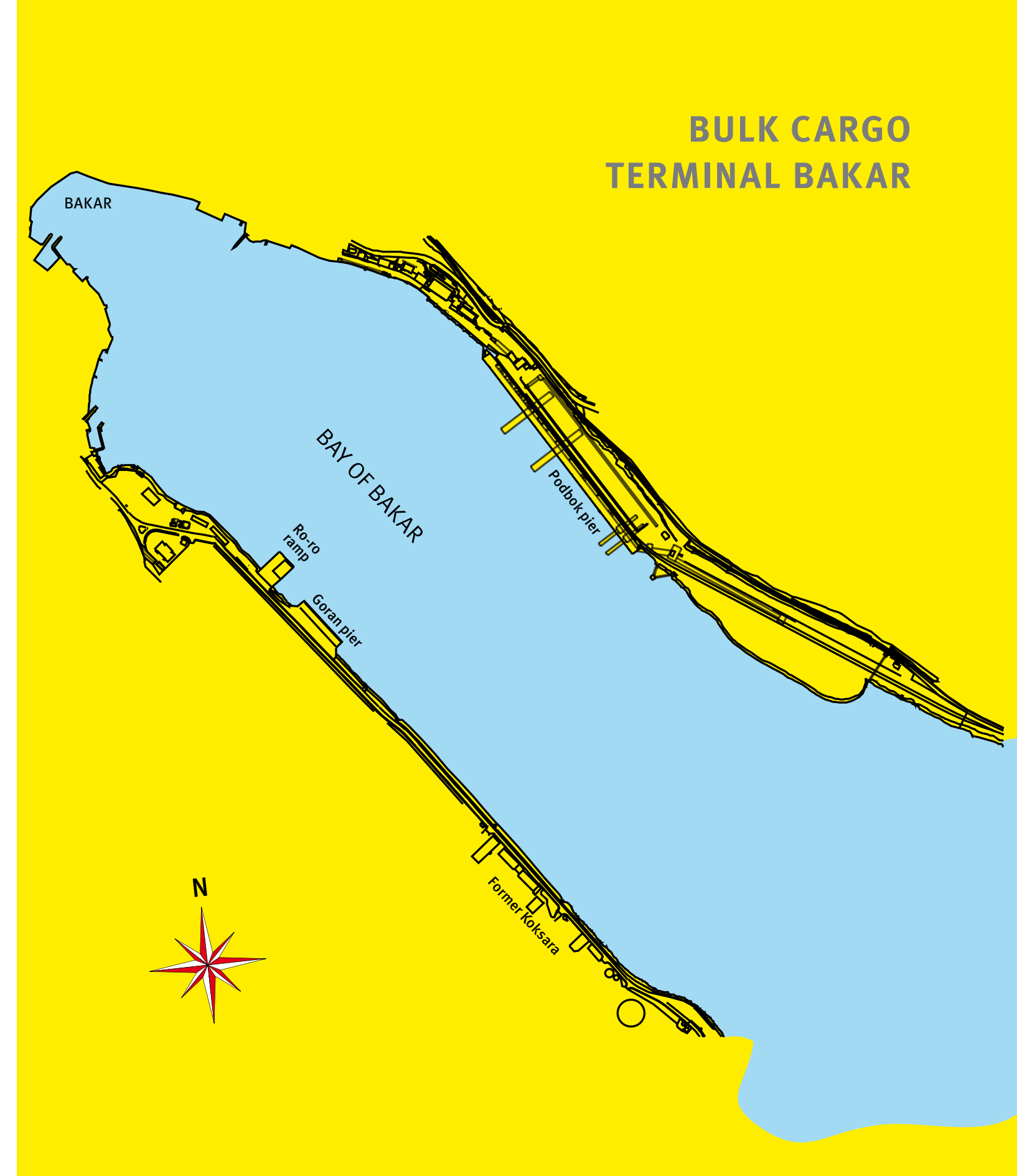
MedCruise (The Association of Mediterranean Cruise Ports)

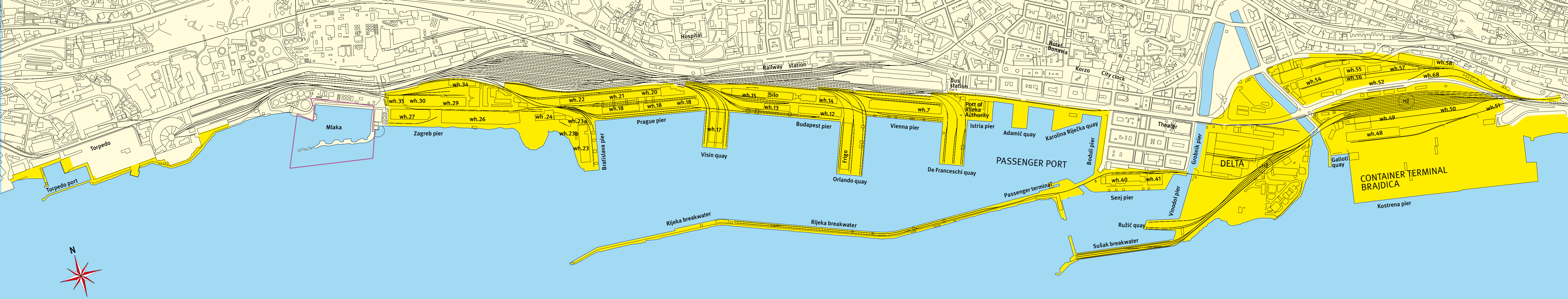
MedCruise is an association of Mediterranean ports for reception of cruisers. Mission of this association is firstly the promotion of cruising tourism in the Mediterranean and related seas. The association supports its members, and helps them utilize and improve the development of tourism by enabling a networked communication and organization of promotion and their professional services. Currently, the association gathers 70 members who represent more than 100 ports in the Mediterranean, including Black Sea, Red Sea and border areas in the Atlantic Ocean, with the purpose of promotion and development of existing and potential destinations, attractive for cruise travels. Additional 30 adjoined members are different organizations, tourist boards and shipping agencies.

NAPA - North Adriatic Ports Association

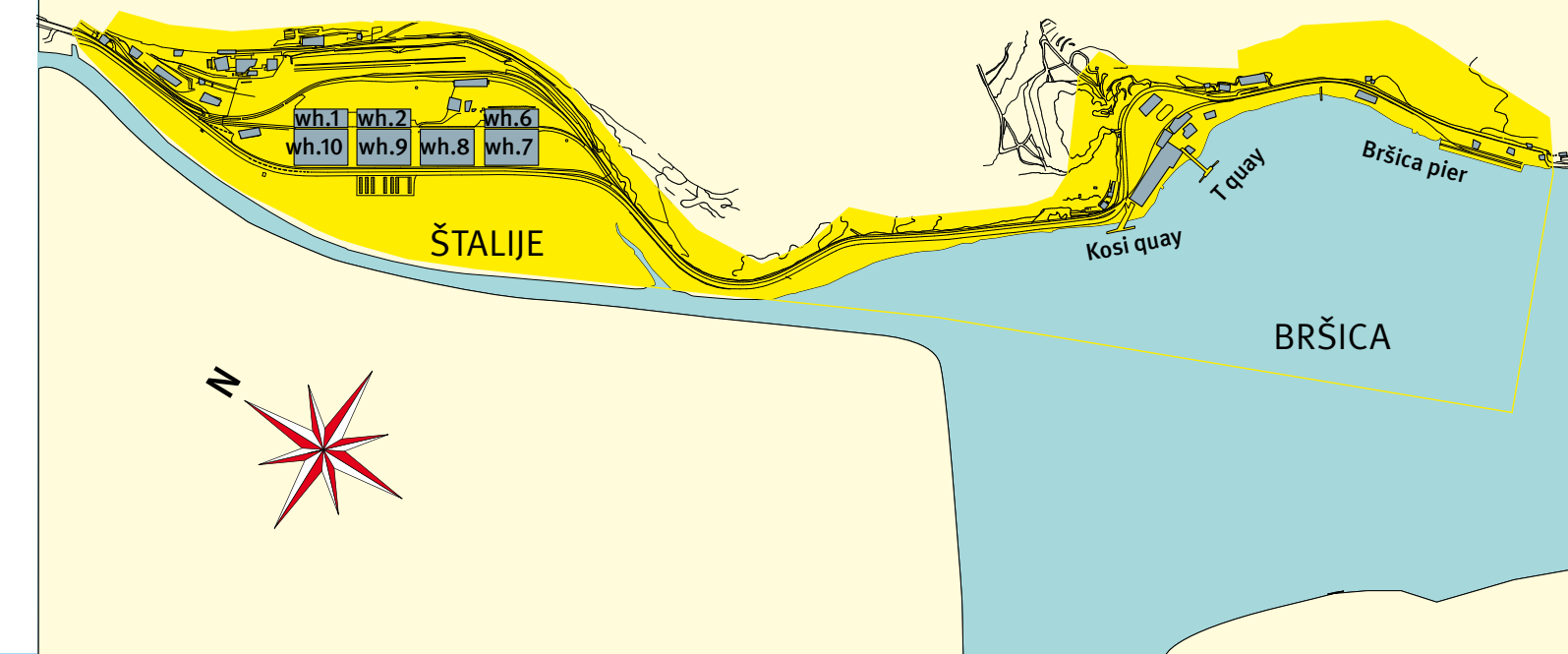
Members of this association are Venice, Trieste, Koper and Rijeka. The main determinant for establishment of this association is cooperation which shall increase the competitiveness of unique north Adriatic region in regards to north European ports. An outline of NAPA documents has been produced. It defines priority activities of operational and infrastructural connections, as well as synchronization of regulations and procedures in the field of providing port services.

Joint promotion and cooperation for improvement of intermodal services, increase of tourist traffic of ships, as well as improvements of environmental protection, safety and information technology, shall have a significant role in development of Rijeka region and therefore Croatia itself.

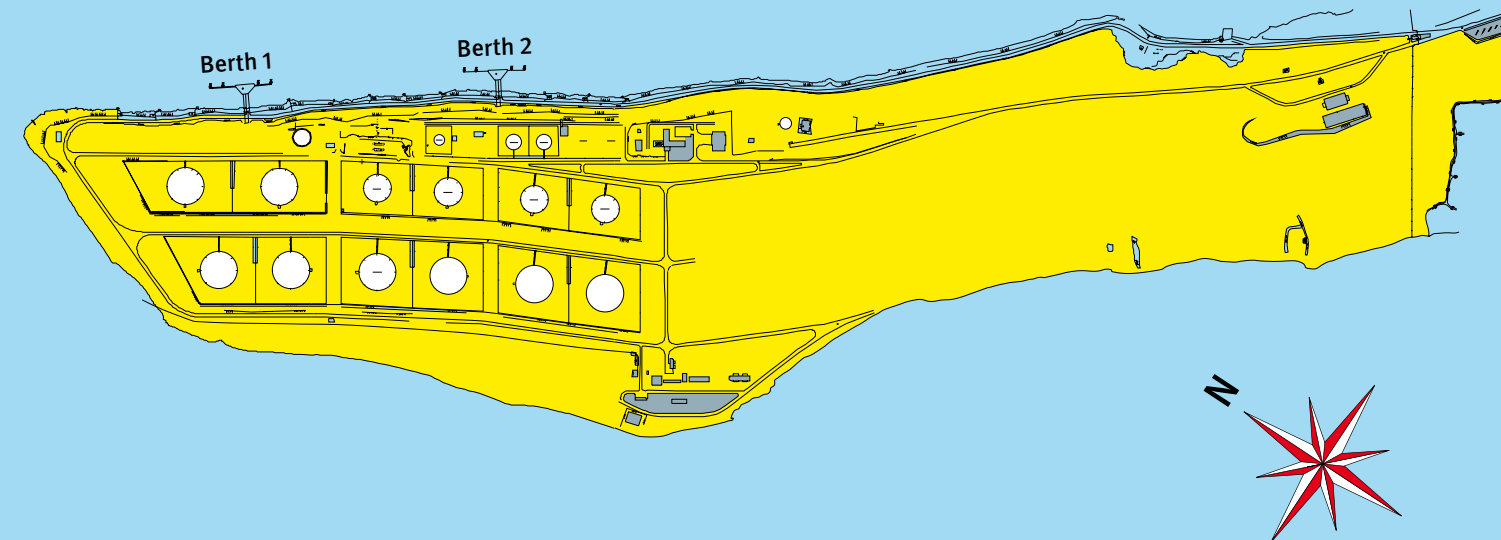




TERMINAL BRŠICA



TERMINAL OMIŠALJ



ROAD TRAFFIC

One of important goals of development of Rijeka Gateway is construction of roads D403 and D404, which enables connection of west (D403) and east (D404) part of port area to a network of Croatian highways.

Road D404 connected Container Terminal Brajdica with highway, thus enabling direct connection with main European traffic corridors.

Road D403 shall connect the western part of port basin with highway. It shall be built by 2018.



TRAFFIC CONNECTIONS

Traffic position in corridor Vb (Pan-European corridor) is the most important for Rijeka port. Through this corridor Rijeka is connected with entire European rail and traffic network.

Connecting with corridor X and Danubian corridor VII, which go through Republic of Croatia, enable a better connection with markets in port's background.

A network of Croatian highways connects the port with its background in the fastest and safest possible way.

Rail corridors go through Zagreb and Ljubljana, and modernization of rail Rijeka - Hungarian border is underway. This rail shall have double rails and its finish is anticipated by 2018.

Apart from roads and rails, petroleum pipe lines are significant in connecting refineries in Croatia, Hungary, Austria, Serbia, Czech Republic and Slovakia.

International airport on Krk island is located in proximity of Rijeka port.



RIJEKA GATEWAY PROJECT

Rijeka Gateway Project, historically the most important project of comprehensive revitalization of a part of Rijeka coastal area is fully underway. This dynamic project has been changing the functioning of Rijeka port and the whole of Rijeka city on many levels and for several years now.

Despite negative circumstances in global market policy, Rijeka Gateway Project has been successfully executed in accordance with port modernization Master Plan, which shall completely resolve the problems of insufficient capacity of existing port terminals, separation of port and city traffic, and create a series of attractive coastal areas for city public life.

Investment of 177 million EUR is planned for modernization of Rijeka port, within Rijeka Gateway Project. 145 million EUR is provided by loan from the World Bank, and 32 million EUR by the state's budget.

With modernization and construction of two container terminals Rijeka port shall reach the capacity of 1.200.000 TEU per year, which is six times more than today. By doing so, Rijeka port shall approach the goal of becoming the largest container port in the region, and one of the most important ports that connect Central Europe and Middle East.



REVITALIZATION OF PORT AREA BY THE CITY CENTRE

A part of Rijeka Gateway Project is conversion of some parts of Rijeka port (Delta area and Baroš port) where existing port contents and activities which are still performed in those areas – storage and manipulation of timber and other materials – shall be relocated to other port areas. Namely, the intention is to build commercial contents (business, residential, cultural and public spaces, hotels, nautical centre) in Delta area and Baroš port. These contents are meant to retrieve the image of Mediterranean/littoral city to Rijeka.

In accordance with Master Plan, Danish companies COWI/Gehl Architects produced guidelines for arrangement of existing 170.000 m² of Delta area and Baroš port.

Renowned Danish Architects who have had numerous experiences with similar projects all over the world suggested possible solutions, with the purpose of creating Rijeka's original identity. Proposed solutions, which shall be gain by publication of urbanistic-architectural bid for the mentioned area, shall constitute a part of bidding documentation for concession. A series of international investors – developers expressed their interest for this project. International bid for arrangement of mentioned areas shall be organized, and arrangement itself shall be awarded to the best possible candidate.

www.mojadelta.com



CONTAINER TERMINAL BRAJDICA

In 2008 Brajdica reached its maximal capacity of 170.000 TEU, which represents a rapid growth compared to 10.000 TEU reached in 2000. About 50 million EUR shall be invested in stimulation of further growth of container traffic.

Works planned on Terminal Gate, extension of Kostrena Pier by 328 m and expansion of operational area (for about 50.000 m²) have been finished in 2013. Depth of new pier is 14,2 m.

Works comprised construction of building with all necessary contents for customs, police, security companies and shipping agents.

The functionally of newly built terminal shall be increased by concessionaire's direct investments; acquisition of 24 million EUR worth new operative equipments: 2 new post-Panamax ship-to-shore cranes (STS), 6 rubber tyred gantry cranes (RTGs), and two rail mounted gantry cranes (RMGs).

Annual capacity of Brajdica Container Terminal has been increased to 600.000 TEU.



PASSENGER PORT

Work group for preparation of cruising strategy was appointed at 10th tourist council conference of Kvarner Tourist Board. The committee includes representatives of Primorsko-goranska County, City of Rijeka, Port of Rijeka Authority, Croatian Tourist Boards chain and different tourist organizations. During reception of cruisers the committee works in coordination with local Tourist Boards, shipping and tourist agencies, customs and police. Members of mentioned port community jointly contribute to the level of service which primarily mirrors in complete technical reception procedure, as well as dynamic and content of offered touristic activities.

Opening of passenger terminal on Rijeka port's breakwater marked the revitalization of passenger traffic in the port, which counts about 200.000 passengers annually. Our goal is to significantly increase this figure within several years. Ability to receive medium-sized cruisers shall most definitely contribute to this goal being achieved. Rijeka breakwater was also open within passenger port as an attractive place to go for a walk (breakwater is 1.750 m long). By doing so, citizens of Rijeka were enabled to reach port area. Different activities and manifestations that enrich free time for citizens of Rijeka as well as visitors take place in this area.



ACCOMPLISHMENTS

Rijeka port is going through a period of biggest changes since its foundation. Extension of Brajdica Container Terminal, creation of conditions for bid for concessions on new Zagreb Pier Container Terminal, final solution of concession for conversion of port area into urban area in Delta and Baroš port and assignation of concession for object in passenger port created prerequisites for technological development. This finishes the initial investment cycle. We are proud of successful cooperation with concessionaire of Brajdica Container Terminal, owner of Adriatic Gate - International Container Terminal Services Inc. (ICTSI). This company fulfilled its investment plan.

By constructing new 328 m of quay wall, new storage area and new gate house, as well as by delivering 10 new cranes (2 QC's, 6 RTG's and 2 RMG's), the terminal is now completely equipped according to world standards. Apart from that, concessionaire Luka Rijeka acquired and installed two new powerful Liebherr cranes on Orlando pier, thus contributing to the quality of port transshipment services. We also established a strong cooperation with the City of Rijeka. This cooperation initiated activities along the coast which shall make a significant contribution to the quality of life. The port cannot be isolated coast for transshipment of cargo; the city, its culture and education of its citizens play an important part in development of business climate which is a characteristic of all world's successful ports located in the centre of town.



MAIN CONCESSIONAIRES

Port of Rijeka Authority awarded concessions to use infra and supra structure to the following companies:



LUKA RIJEKA d.d. is a company that uses most of Rijeka port area. On the basis of concession contract for usage of port infra and supra structure and conduction of port and other economic activities, this company offers reload and storage services for all types of cargo, except oil and oil derivates.

LUKA RIJEKA d.d.
 Riva 1, 51000 Rijeka, Croatia
 tel: +385 (0)51 496-000, fax: +385 (0)51 496-002
 e-mail: info@lukarijeka.hr
www.lukarijeka.hr



Joint venture of ICTSI (International Container Terminal Services Inc. With seat in Manila, the Philippines) and Luka Rijeka. At Brajdica Container terminal they offer good quality manipulation and storage services with shortest routes between Europe and Far East, along with regular direct and feeder lines.

ADRIATIC GATE CONTAINER TERMINAL / AGCT
 Šet. A. Kačića Miošića bb, 51000 Rijeka, Croatia
 tel: +385 (0)51 332-806, fax: +385 (0)51 373-007
 e-mail: info@ictsi.hr
www.ictsi.hr



Janaf d.d. (Adriatic petroleum pipe line) is a concessionaire in Omišalj oil terminal port. They manage oil supply system which was designed and built between 1974 and 1979 as contemporary, efficient and economical system of oil transport for domestic and foreign users. Apart from oil transport, reload of liquid cargo and oil/oil derivatives storage play an important role in Janaf's business activities. Janaf system was built as international transport system for transport of oil from Omišalj port to domestic and foreign refineries in East and Central Europe.

JANAF d.d.
 Ulica grada Vukovara 14, 10000 Zagreb, Croatia
 tel: +385 (0)1 3039-999, fax: +385 (0)1 3095-482
 e-mail: janaf@janaf.hr
www.janaf.hr



EXPORTDRVO d.d. is a traditional exporter of primary, semi-final and final timber products of Croatia's wood industry. The company has existed for more than half a century. The company is concessionair on the port area in Raša.

EXPORTDRVO d.d.
 Marulićev trg 18, 10000 Zagreb, Croatia
 tel: +385 (0)1 4560-225, fax: +385 (0)1 4560-222
 e-mail: exportdrvo@exportdrvo.hr
www.exportdrvo.hr



ŠERIF EXPORT-IMPORT d.o.o., with seat in Zagreb, is one of most powerful trade companies for processing and shipment of wood in the region. This company belongs to a group of 1% of most efficient companies in the Republic of Croatia. In 2010 ŠERIF EXPORT-IMPORT and Port of Rijeka Authority signed concession contract for usage of port of Raša. By doing so, this company insured the possibility of placing wooden products to overseas countries, thus increasing its competitiveness on world market.

ŠERIF EXPORT-IMPORT d.o.o.
 Oranice 11, 10090 Zagreb, Croatia
 tel: +385 (0)1 3886-595, fax: +385 (0)1 3896-696
 e-mail: sherif@sherif.hr
www.sherif.hr



CONCESSIONAIRES FOR CONDUCTION OF OTHER PORT ACTIVITIES



Jadranski pomorski servis d.d. Rijeka

Main services of this company are towing, salvations, floating pontoon crane service, transport of oil and oil products and ecologic protection of the sea.

The company provides towing services in Rijeka port area, where they are sole concessionaire, in "3. maj", "Viktor Lenac" and "Kraljevica" shipyard area, oil terminal Omišalj area, INA-Rijeka (Urinj, Mlaka, Bakar, Sršćica) refinery area, in Plomin bay, in Raša, in "Uljanik" shipyard area and in Pula port area. Jadranski Pomorski Servis provides towing services in the whole of Adriatic Sea, and soon they plan to expand their business in Mediterranean Sea area.

JADRANSKI POMORSKI SERVIS d.d.

Verdijeva 19, 51000 Rijeka, Croatia
tel: +385 (0)51 214-887, fax: +385 (0)51 313-161
e-mail: jps@jps.hr | www.jps.hr



Sea and ground water protection services Decontamination services of removing oily slicks and other substances from water surfaces and shoreline, or of any other contaminated surface using modern technologies and biodegradable non-toxic dispersants.

DEZINSEKCIJA d.o.o.

Brajšina 13, 51000 Rijeka, Croatia
tel: +385 (0)51 506-920, fax: +385 (0)51 512-769
dezinskecija@ri.t-com.hr | www.dezinsekcija.hr



Protection activity is an importance service because of execution of physical and technical protection of persons and property. This activity is conducted by controlling entrance and exist points and other working areas, and by surveillance visits. Protect holds highest professional standards and the most sophisticated technology which guarantees an optimal system of protection.

PROTECT d.o.o.

Vukovarska 21, 51000 Rijeka, Croatia
tel: +385 (0)51 358-555, fax: +385 (0)51 675-610
e-mail: protect@ri.t-com.hr | www.protect.hr



LUČKA UPRAVA RIJEKA
PORT OF RIJEKA AUTHORITY

PORT OF RIJEKA AUTHORITY

51000 Rijeka, Riva 1, Croatia
www.portauthority.hr

DIRECTOR'S OFFICE

tel: +385 (0)51/351-177
fax: +385 (0)51/331-764
rijeka.gateway@portauthority.hr

COMMERCIAL AND OPERATIVE AFFAIRS

tel: +385 (0)51/351-115
fax: +385 (0)51/351-144
commercial.ri@portauthority.hr

TECHNICAL AFFAIRS AND MAINTENANCE

tel: +385 (0)51/351-112
fax: +385 (0)51/213-112
technical.ri@portauthority.hr

MARKETING

tel: +385 (0)51/351-117
fax: +385 (0)51/351-154
marketing.ri@portauthority.hr

PORT CONTROL CENTRE

tel: +385 (0)51/333-600
fax: +385 (0)51/332-195
controlcenter.ri@portauthority.hr



www.aivp.org



www.portauthority.hr



www.portsofnapa.com



www.eia-ngo.com



www.iaphworldports.org



www.espo.be



www.ecoports.com



www.medcruise.com

LUČKA UPRAVA RIJEKA
PORT OF RIJEKA AUTHORITY
INFO 2013

**OSNOVNE LUČKE
DJELATNOSTI**
CONCESSIONS FOR
THE PORT OPERATIONS
ACTIVITIES

LUKA RIJEKA d.d.
Riva 1, 51000 Rijeka
tel: +385 (0)51 355-508
fax: +385 (0)51 332-203
info@lukarijeka.hr
www.lukarijeka.hr

JADRANSKA VRATA d.d.
Šet. A. Kačića - Miošića bb
51000 Rijeka
tel: +385 (0)51 332-806
fax: +385 (0)51 373-007
info@ictsi.hr
www.adriatic-gate.hr

JANAF d.d.
Ulica grada Vukovara 14
10000 Zagreb
tel: + 385 (0)1 3039-999
fax: +385 (0)1 3095-482
janaf@janaf.hr
www.janaf.hr

EXPORTDRVO d.d.
Marulićev trg 18, 10000 Zagreb
tel: +385 (0)1 4560-222
fax: +385 (0)1 4829-942
exportdrvo@exportdrvo.hr
www.exportdrvo.hr

ŠERIF EXPORT-IMPORT d.o.o.
I. oranički odvojak 4
10000 Zagreb
tel: +385 (0)1 3886-595
fax: +385 (0)1 3896-696
sherif@sherif.hr
www.sherif.hr

**LUČKO
TEGLJENJE**
TOWING
SERVICES

JADRANSKI POMORSKI SERVIS d.d.
Verdijeva 19, 51000 Rijeka
tel: +385 (0)51 214-887
fax: +385 (0)51 313-161
jps@jps.hr
www.jps.hr

**FUMIGACIJA I
DERATIZACIJA**
FUMIGATION AND
RODENT/PEST
CONTROL

DEZINSEKCIJA d.o.o.
Brajšina 13, 51000 Rijeka
tel: +385 (0)51 506-920
fax: +385 (0)51 512-769
dezinsekcija@ri.t-com.hr
www.dezinsekcija.hr

IND-EKO d.o.o.
Korzo 40, 51000 Rijeka
tel: + 385 (0)51 336-093
fax: +385 (0)51 336-022
e-mail:info@ind-eko.hr
www.ind-eko.hr

**KONTROLA KOLIČINE I
KAKVOĆE ROBE**
QUALITY AND
QUANTITY CONTROL OF
GOODS

ADRIAINSPEKT d.d.
Ciottina 17 b, 51000 Rijeka
tel: +385 (0)51 330-934
fax: +385 (0)51 336-176
ai@adriainspekt.hr
www.adriainspekt.hr

BC BAKRAČ KONTROL d.o.o.
Trg Žabica 2/II, 51000 Rijeka
tel: +385 (0)51 211-312
fax: +385 (0)51 212-162
e-mail: bc-bakrac-control@ri.htnet.hr

EUROINSPEKT-CROATIAKONTROLA d.o.o.
Mljekarski trg 2, 51000 Rijeka
tel: +385 (0)51 335-722
fax: +385 (0)51 215-581
croatiakontrola@zg.t-com.hr
www.croatiakontrola.hr

INSPECTORATE d.o.o.
Užarska 17a, 51000 Rijeka
tel: +385 (0)51 339-390
fax: +385 (0)51 334-812
info@inspectorate-croatia.hr
www.inspectorate.com

MARITIME CONSULT d.o.o.
Trg I. Koblera 2, 51000 Rijeka
tel: +385 (0)51 336-049
fax: +385 (0)51 336-049
maritime@maritime-consult.hr

SGS ADRIATICA d.o.o.
Karlovačka cesta 4 i, 10000 Zagreb
tel: +385 (0)1 614-0961
fax: +385 (0)1 614-0962
sgs-adriatica@ri.t-com.hr
www.hr.sgs.com

ZIK d.o.o.
Ljudevita Gaja 17/III
10000 Zagreb
tel: +385 (0)1 4806-777
fax: +385 (0)1 4873-401
rijeka@zik.hr
www.zik.hr

SAYBOLT PAN ADRIATIKA d.o.o.
Jurjevska 41, 10000 Zagreb
tel: +385 (0)1 4668-128
fax: +385 (0)1 4668-139
saybolt_croatia@ri.htnet.hr
www.saybolt.com

JADRANSKA KONTROLA TERETA d.o.o.
Bajšina 16, 51000 Rijeka
tel: +385 (0)51 227-307
fax: +385 (0)51 227-307
info@jkt.hr
www.jkt.hr

CROATIAINSPECT d.o.o.
Tkalčićeva 7/IV, 10000 Zagreb
tel: +385 (0)1 487-4777
fax: +385 (0)1 487-3728
mvucak@croatiainspect.hr
www.croatiainspect.hr

CAPT. V. VODARIC & SON d.o.o.
Drenovski put 30, 51000 Rijeka
tel: +385 (0)51 500-250
fax: +385 (0)51 500-252
capt-vodaric@ri.htnet.hr
www.capt-vodaric.cjb.net

IND-EKO d.o.o.
Korzo 40, 51000 Rijeka
tel: + 385 (0)51 336-093
fax: +385 (0)51 336-022
info@ind-eko.hr
www.ind-eko.hr

INSPECTO d.o.o.
Električne centrale 1, 31400 Đakovo
tel: +385 (0)31 813-479
fax: +385 (0) 31 822-146
inspecto@inspecto.hr
www.inspecto.hr

IMCS JADRAN d.o.o.
Gajeva 8, 51000 Rijeka
tel: +385 (0)51 425-571
fax: +385 (0)51 400-250
imcs-jadran1@ri.t-com.hr
www.inspecto.hr

OPSKRBA BRODOVA
SHIPCHANDLERS
AND EQUIPMENT

A.M.E.C. d.o.o.
Osječka 47, 51000 Rijeka
tel: +385 (0)51 500-770
fax: +385 (0)51 516-382
amec@amec.hr
www.amec.hr

Stella IMPEX d.o.o.
Strossmayerova 11, 51000 Rijeka
tel: +385 (0)51 371-008
fax: +385 (0)51 371-008
stella-impex@ri.htnet.hr

COSMO d.o.o.
D. Gervaisa 41, 51000 Rijeka
tel: +385 (0)51 345-082
fax: +385 (0)51 322-083
cosmo@ri.htnet.hr

BEN SHIP SUPPLY d.o.o.
Riva Boduli 1/VI, 51000 Rijeka
tel: +385 (0)51 214-712
fax: +385 (0)51 214-712
benship@benship.hr

BATER d.o.o.
Kampanja 19, 51000 Rijeka
tel: +385 (0)51 216-104
fax: +385 (0)51 217-383
bater@bater.hr
www.bater.hr

KONZUM d.d.
M. Čavića 1a, 10000 Zagreb
tel: +385 (0)1 248-2222
fax: +385 (0)1 248-2157
marketing@konzum.hr
www.konzum.hr

IN-VISO d.o.o.
Bilogorska 9, 51000 Rijeka
tel: +385 (0)51 643-065
fax: +385 (0)51 643-065
in-viso@mail.net.hr

ADRIA ALFA d.o.o.
Od Svetog Križa 3, 20000 Dubrovnik
tel: +385 (0)20 418-642
fax: +385 (0)20 418-642
adria.alfa@du.t-com.hr
www.adriaalfa.hr/contact

RADION d.o.o.
Grgura Budislavića 119
23000 Zadar
tel: +385 (0)23 684-840
fax: +385 (0)23 684-842
radion@radion.biz
www.radion.biz

**DOSTAVA GORIVA
BRODOVIMA**
BUNKERING (SHIP FUEL
SUPPLY)

ADRIA OIL d.o.o.
Spinčiči 38, 51215 Kastav
tel: +385 (0)51 742-444
fax: +385 (0)51 742-445
info@adriaoil.hr
www.adriaoil.hr

LUKOIL CROATIA d.o.o.
Ulica grada Vukovara 284
10000 Zagreb
tel: +385 (0)1 699-9303
fax: +385 (0)1 699-9301
lukoil@lukoil.hr
www.lukoil.hr

INA d.d.
Av.V.Holjevca 10, 10000 Zagreb
tel: +385 (0)1 645-0000
fax: +385 (0)1 645-2524
ina-besplatni.telefon@ina.hr
www.ina.hr

IND-EKO d.o.o.
Korzo 40, 51000 Rijeka
tel: +385 (0)51 336-093
fax: +385 (0)51 /336-022
info@ind-eko.hr
www.ind-eko.hr

TANKER d.d.
Kopilica 47 B, 21000 Split
tel: +385 (0)21 340-300
fax: +385 (0)21 340-305
tanker@tanker.hr
www.tanker.h

**PRANJE
BRODSKE ROBE**
SHIP’S LOUNDRY
SERVICE

USLUGA “BRITE”
Jurjeniči 73, 51215 Kastav
tel: +385 (0)51 321-041
fax: +385 (0)51 321-042

USLUŽNI OBRT “FLEKICA”
Gariči 35, 51216 Viškovo
tel: +385 (0)91 503-7509

**PRIHVAT I OTPREMA
KRUTOG OTPADA**
SOLID WASTE
MANAGEMENT

KD ČISTOĆA d.o.o.
Dolac 14, 51000 Rijeka
tel: +385 (0)51 353-444
fax: +385 (0)51 353-410
cistoca.rijeka@cistoca-ri.hr
www.cistoca-ri.hr

ARMIŽADOR-obrt
Lj. Posavskog 27, 52100 Pula
tel: +385 (0)52 386-854
fax: +385 (0)52 386-854
petar.blaskovic@pu.t-com.hr

IND-EKO d.o.o.
Korzo 40, 51000 Rijeka
tel: +385 (0)51 336-093
fax: +385 (0)51 336-022
info@ind-eko.hr
www.ind-eko.hr

**PRIHVAT I OTPREMA
TEKUĆEG OTPADA**
LIQUID WASTE
MANAGEMENT

DEZINSEKCIJA d.o.o.
Brajšina 13, 51000 Rijeka
tel: +385 (0)51 506-920
fax: +385 (0)51 512-769
dezinsekcija@ri.htnet.hr
www.dezinsekcija.hr

IND-EKO d.o.o.
Korzo 40, 51000 Rijeka
tel: +385 (0)51 336-093
fax: +385 (0)51 336-022
info@ind-eko.hr
www.ind-eko.hr

ECOOPERATIVA d.o.o.
Kukuljanovo 451, 51223 Škrljevo
tel: +385 (0)51 277-750
fax: +385 (0)51 274-534
info@ecooperativa.hr
www.ecooperativa.hr

PLUS RI –TANK d.o.o.
Bartola Kašića 8, 51000 Rijeka
tel: +385 (0)51 212-838
fax: +385 (0)51 211-864
ritank@ritank.htnet.hr
www.rijekatank.hr

KEMIS-TERMOCLEAN d.o.o.
Sudiščak 3, 10000 Zagreb
tel: +385 (0)1 2406-303
fax: +385 (0)1 2404-734
info@kemis-termoclean.hr
www.kemis-termoclean.hr

JADRANSKI POMORSKI SERVIS d.d.
Verdieva 19/I, 51000 Rijeka
tel: +385 (0)51 355-000
fax: +385 (0)51 313-161
info@jps.hr
www.jps.hr

RIJEKATANK d.o.o.
Bartola Kašića 5, 51000 Rijeka
tel: +385 (0)51 561-270
fax: +385 (0)51 323-725
rijekatank@rijekatank.hr
www.rijekatank.hr

**ČISTOĆA-
NUSPROIZVODI**
ŽIVOTINJSKOG
PORIJEKLA
WASTE MANAGEMENT
- RECEPTION OF
WASTE ANIMAL ORIGIN
PRODUCTS

VETERINARSKA STANICA RIJEKA d.o.o.
Stube Marka Remsa 1, 51000 Rijeka
tel: +385 (0)51 345-033
fax: +385 (0)51 345-038
vetstri@vetstri.hr
www.vetstri.hr

**ČISTOĆA-PRIHVAT
I ZBRINJAVANJE
NEOPASNOG I
OPASNOG OTPADA**
WASTE MANAGEMENT
- RECEPTION AND
DISPOSAL HAZARDOUS
AND NON-HAZARDOUS
WASTE

METIS d.d.
Kukuljanovo 414, 51223 Škrljevo
tel: +385 (0)51 339-910
fax: +385 (0)51 331-186
metis@metis.hr
www.metis.hr

**ZAŠTITARSKA
DJELATNOST**
ČUVANJA
PROTECTING
AND GUARDING
SERVICES

PROTECT RIJEKA d.o.o.
Vukovarska 21, 51000 Rijeka
tel: +385 (0)51 358-555
fax: +385 (0)51 675-610
protect@protect.hr
www.protect.hr

**PRUŽANJE
USLUGA
PUTNICIMA**
PROVIDING OF
SERVICES TO
PASSENGERS

YACHT MARINE d.o.o.
Skrbčiči 55c, 51500 Krk
tel: +385 (0)91 186-3073

FORUM UGOSTiteljSTVO d.o.o.
Vukovarska 21, 51000 Rijeka
tel: +385 (0)51 671-218
fax: +385 (0)51 671-218
brodokomerc.forum@ri.t-com.hr

ARHIPELAG d.o.o.
Zagrebačka 67, 51550 Mali Lošinj
tel: +385 (0)51 233-551
fax: +385 (0)51 233-539
arhipelag@ri.tel.hr

MARETA d.o.o.
Petra Jurčića 4, 51000 Rijeka
tel: +385 (0)95 564-3035
davor.lukas@ri.t-com.hr

GOSPODARSKO
KORIŠTENJE I
ODRŽAVANJE OBJEKTA
SUPRASTRUKTURE
SUPERSTURCTURE
MANAGEMENT AND
MAINTENANCE

DEZINSEKCIJA d.o.o.
Brajšina 13, 51000 Rijeka
tel: +385 (0)51 506-920
fax: +385 (0)51 512-769
dezinsekcija@ri.htnet.hr
www.dezinsekcija.hr

PRIVEZ/ODVEZ
BRODOVA
MOORING AND
UNMOORING OF THE
VESSELS

LUKA PRIVEZ-ODVEZ d.o.o.
Riva 1, 51000 Rijeka
tel: +385 (0)51 213-794
fax: +385 (0)51 321-641
privez.odvez@lukarijeka.hr

PRIVEZ-ODVEZ d.o.o.
Zagrebačka 18, 51000 Rijeka
tel: +385 (0)51 618-740
fax: +385 (0)51 211-232
privez-odvez2@ri.htnet.hr

OPASIVANJE BRODOVA
PLUTAJUĆIM BRANAMA
INSTALLATION OF
FLOATING BARRIERS
AROUND THE SHIP

DEZINSEKCIJA d.o.o.
Brajšina 13, 51000 Rijeka
tel: +385 (0)51 506-920
fax: +385 (0)51 512-769
dezinsekcija@ri.htnet.hr
www.dezinsekcija.hr

ŠPEDITERI
FORWARDERS

ACORD-ŠPED d.o.o.
Mavrinci 19/a, 51219 Čavle
tel: +385 (0)51 335-956
fax: +385 (0)51 213-329
acord-sped@ri.t-com.hr
www.acord-sped.hr

ADRIAŠPED d.o.o.
Kukuljanovo b.b., 51227 Kukuljanovo
tel: +385 (0)51 626-159
fax: +385 (0)51 626-160
adriasped@ri.t-com.hr

ANIMO d.o.o.
Brajda 2, 51000 Rijeka
tel: +385 (0)51 336-631;
fax: +385 (0)51 322-350
luce@animo.hr
nenad@animo.hr
www.animo.hr

CENTRALŠPED d.o.o.
Kukuljanovo b.b., 51227 Kukuljanovo
tel: +385 (0)51 625-777
fax: +385 (0)51 625-933
centralsped@ri.t-com.hr

CKTZ Rijeka
Uljarska 4/II, 51000 Rijeka
tel: +385 (0)51 212-832
fax: +385 (0)51 212-878
rijeka@cktz.hr
www.cktz.hr

CROATIAŠPED d.d.
Križanićeva 2, 51000 Rijeka
tel: +385 (0)51 626-221
fax: +385 (0)51 626-235
rijeka@croatiasped.hr
www.croatiasped.hr

DEMARS INTERNATIONAL d.o.o.
Šetalište A.K. Miošića b.b.
51000 Rijeka
tel: +385 (0)51 377-215
fax: +385 (0)51 377-216
ana@demars-intl.com
www.demars-intl.com

EURO STAR d.o.o.
Strossmayerova 8, 51000 Rijeka
tel: +385 (0)51 371-006
fax: +385 (0)51 371-150
info@eurostar.hr
www.eurostar.hr

FIDENTIA d.o.o.
Put Vele Crikve 1, 51000 Rijeka
tel: +385 (0)51 339-604
fax: +385 (0)51 211-363
info@fidentia.hr

GREEN MAR d.o.o.
Žrtava fašizma 1, 51000 Rijeka
tel: +385 (0)51 213-666,
fax: +385 (0)51 213-233
info@green-mar.hr

GROMEN d.o.o.
Kukuljanovo b.b., 51227 Kukuljanovo
tel: +385 (0)51 626-188
fax: +385 (0)51 626-172
gromen.rijeka@gmail.com
gromen@metromail.hr

HERMES d.o.o.
Kukuljanovo b.b., 51227 Kukuljanovo
tel: +385 (0)51 251-940
fax: +385 (0)51 214-591
spedicija@hermes.com.hr
www.hermes.com.hr

HŽ CARGO d.o.o.
Žabica 5, 51000 Rijeka
tel: +385 (0)51 331-699
fax: +385 (0)51 331-002
hzcargo.spedicija@ri.t-com.hr
www.hzcargo.hr

ILIRIJAŠPED d.o.o.
Kukuljanovo 414, 51227 Kukuljanovo
tel: +385 (0)51 212-991
fax: +385 (0)51 336-251
ilirijasped@ri.t-com.hr

INTEREUROPA, logističke usluge d.o.o.
Dražice 123 b, 51000 Rijeka
tel: +385 (0)51 666-990
fax: +385 (0)51 666-933
uprava@intereuropa.hr
www.intereuropa.hr

INTERMAR d.o.o.
Čičarijska 12, 51000 Rijeka
tel: +385 (0)51 269-141
fax: +385 (0)51 260-383
intermar@ri.t-com.hr

ITERAFIC d.o.o.
Rastočine 4, 51000 Rijeka
tel: +385 (0)51 323-515
fax: +385 (0)51 323-516
info@iterafic.hr

JADROAGENT d.d.
Trg Ivana Koblera 2, 51000 Rijeka
tel: +385 (0)51 211-630
fax: +385 (0)51 211-622
info@jadroagent.hr
www.jadroagent.hr

JADROŠPED d.o.o.
A. K. Miošića 13, 51000 Rijeka
tel: +385 (0)51 373-654
fax: +385 (0)51 373-576
jadrosped@lukarijeka.hr
www.jadrosped.hr

KOKOTIĆ d.o.o.
Lukeži 25, 51218 Dražice
tel: +385 (0)51 502 422
fax: +385 (0)51 230-066
kokotic@ri.t-com.hr

KORACA d.o.o.
Mirka Jengića 44, 51000 Rijeka
tel: +385 (0)51 637-454
fax: +385 (0)51 637-459
vlado@koraca.hr
www.koraca.hr

KUEHNE & NAGEL d.o.o.
Šetalište A.k. Miošića b.b.
51000 Rijeka
tel: +385 (0)51 371-505
fax: +385 (0)51 371-491
info.rijeka@kuehne-nagel.com
www.kn-portal.com

LAGERMAX TIMESPED,d.o.o.
Kukuljanovo 410, 51227 Kukuljanovo
tel: +385 (0)51 652-001
fax: +385 (0)51 652-011
rijeka@lagermax-aed.hr
www.lagermax-aed.hr

LIKAR d.o.o.
I. Maja 10 a, 51000 Rijeka
tel: +385 (0)51 211-015
fax: +385 (0)51 214-967
likar@likar.hr
mrsped@ri.t-com.hr

MURASPID d.o.o.
Križanićeva 2/5, 51000 Rijeka
tel: +385 (0)51 377-344
fax: +385 (0)51 377-354
pos.rijeka@muraspid.t-com.hr
www.muraspid-ck.com

PROFI TRANS (PTG) d.o.o.
Kukuljanovo b.b., 51227 Kukuljanovo
tel: +385 (0)51 503-342
fax: +385 (0)51 503-343
profi.trans@ri.t-com.hr
www.profitrans.hr

ZAGREBŠPED, POSLOVNICA RIJEKA d.o.o.

Ivana Grohovca 2, 51000 Rijeka
tel: +385 (0)51 332-099
fax: +385 (0)51 335-615
rijeka@zagrebsped.hr
www.zagrebsped.hr

SCHENKER d.o.o.

Verdijeva 6, 51000 Rijeka
tel: +385 (0)51 313-690
fax: +385 (0)51 313-691
rijeka.hr@dbschenker.com
www.dbschenker.com/hr

ŠPEDTRANS WORLD d.o.o.

Vukovarska 10 a, 51000 Rijeka
tel: +385 (0)51 505-300
fax: +385 (0)51 545-400
spedicija@spedtrans.hr
www.spedtrans.hr

ANIMO d.o.o.

Brajda 2, 51000 Rijeka
tel: +385 (0)51 336-631;
fax: +385 (0)51 322-350
luce@animo.hr
nenad@animo.hr
www.animo.hr

TRANS ATLAS d.o.o.

Emilija Randića 4, 51000 Rijeka
tel: +385 (0)51 674-202
fax: +385 (0)51 674-202
transatlas@net.hr

TRANSFER d.o.o.

Ciottina 26, 51000 Rijeka
tel: +385 (0)51 330-620
fax: +385 (0)51 339-114
transfer@ri.t-com.hr
www.transfer-ri.hr

TRANSLOG d.o.o.

Zagrebačka 1, 51000 Rijeka
tel: +385 (0)51 317-506
fax: +385 (0)51 317-507
forwarding@translog.hr
agency@translog.hr

TRANŠPED ZAGREB d.o.o.

Šetalište A.K. Miošića b.b.
51000 Rijeka
tel: +385 (0)51 211-343
fax: +385 (0)51 334-529
rijeka@transped.hr
www.transped.hr

TRAST d.d.

Verdijeva 3, 51000 Rijeka
tel: +385 (0)51 325-080
fax: +385 (0)51 214-721
rijeka@trast.hr
www.trast.hr

AGENTS

ADRIASHIP d.o.o.

Koblerov trg 2, 51000 Rijeka
tel: +385 (0)51 211-838
fax: +385 (0)51 211-834
vinko.babic@jadroagent.hr

ADRIATICA RIJEKA d.o.o.

Verdieva 6, 51000 Rijeka
tel: +385 (0)51 214-511
fax: +385 (0)51 214-300
adriatica-ri@ri.t-com.hr
www.adriatica-ri.hr

AGEMAR RIJEKA d.o.o.

M. Tita 21, 51410 Opatija
tel: +385 (0)51 324-740
fax: +385 (0)51 324-741
mob: 098 329 437
agemar-rijeka@ri.t-com.hr
www.agemar.it

ALIANCA d.o.o.

Školjić 6/II, 51000 Rijeka
tel: +385 (0)51 327-260
fax: +385 (0)51 212-675
agency@alianca.hr

ANAMILA d.o.o.

Splitska 2, 51000 Rijeka
tel: +385 (0)51 325-460
fax: +385 (0)51 323-778
info@anamila.hr
www.anamila.hr

ANGLO ADRIATIC d.o.o.

Janka Polića Kamova 8
51000 Rijeka
tel: +385 (0)51 371-268
fax: +385 (0)51 322-551
info@angloadriatic.hr
www.angloadriatic.hr

BELLATRIX d.o.o.

Užarska 17/II, 51000 Rijeka
tel: +385 (0)51 500-377
fax: +385 (0)51 500-379
bellatrix@ri.htnet.hr

BURA d.o.o.

Fiorello La Guardia 13/7
51000 Rijeka
tel: +385 (0)51 213-403
fax: +385 (0)51 213-403
bura-ri@ri.t-com.hr

B.W.A. d.o.o.

Vladimira Nazora 3
51410 Opatija
tel: +385 (0)51 703-773
fax: +385 (0)51 703-774
croatia@bwayachting.com
www.bwayachting.com

CAPRIS CROATIA d.o.o.

Agatićeva 2, 51000 Rijeka
tel: +385 (0)51 317-170
fax: +385 (0)51 317-178
capris@capris.hr
www.capris.si

CB MARITIME d.o.o.

Riva 4, 51000 Rijeka
tel: +385 (0)51 376-001
fax: +385 (0)51 376-005
contact@cbmaritime.hr
www.cbmaritime.hr

CMA CGM CROATIA d.o.o.

Žrtava fašizma 2/2
51000 Rijeka
tel: +385 (0)51 327-595
fax: +385 (0)51 327-570
rjk.genmbbox@cma-cgm.com
www.cma-cgm.com

CROATIA CHARTERING d.o.o.

Dolac 5, 51000 Rijeka
tel: +385 (0)51 213-422
fax: +385 (0)51 214-333
croatia-chartering@croatia-chartering.hr
www.croatia-chartering.hr

DINAMARIN d.o.o.

Riva 20, 51000 Rijeka
tel: +385 (0)51 321 095
fax: . +385 (0)51 319 004
dinamarin@dinamarin.hr
www.dinamarin.hr

EUROMAR AGENT d.o.o.

Ribarska 2, 51000 Rijeka
tel: +385 (0)51 211-126
fax: +385 (0)51 211-068
operations@euromar.hr
euromar@ri.t-com.hr

FLUMEN SHIPPING & CHARTERING d.o.o.

Matije Gupca 6, 51000 Rijeka
tel: +385 (0)51 211-239
fax: +385 (0)51 211-228
flumen@flumen-shipping.hr
www.flumen-shipping.hr

GARMA d.o.o.

Trpimirova 4, 51000 Rijeka
tel: +385 (0)51 211-287
fax: +385 (0)51 330-278
garma@garma.hr
www.garma.hr

INTERLINER AGENCIES d.o.o.

Andrije Medulića 6, 51000 Rijeka
tel: +385 (0)51 351-040
fax: +385 (0)51 351-049
sales@interliner-agencies.com
www.interliner-agencies.com

JADROAGENT d.o.o.

Trg Ivana Koblera 2
51000 Rijeka
tel: +385 (0)51 780-767
fax: +385 (0)51 213-952
info@jadroagent.hr
www.jadroagent.hr

JPS AGENCIJA d.d.

Verdieva 19, 51000 Rijeka
tel: +385 (0)51 355-000
fax: +385 (0)51 331-161
jps@jps.hr
www.jps.hr

LIBURNIA POMORSKA AGENCIJA d.o.o.

V. Cara Emina 3, 51410 Opatija
tel: +385 (0)51 703-540
fax: +385 (0)51 703-550
agency@liburniamar.hr
www.liburniamar.hr

LOTUS SHIPPING**AGENCIES SAL d.o.o.**

M. Albaharija 9, 51000 Rijeka
tel: +385 (0)51 323-996
fax: +385 (0)51 323-997
rijeka@lotusshipping.com

MAERSK LINE

Fiorello La Guardia 13/3
51000 Rijeka
tel: +385 (0)51 324-466
fax: +385 (0)51 332-379
igor.grgic@maersk.com
www.maerskline.com

SAFMARINE CONTAINER LINE

Fiorello La Guardia 13/3
51000 Rijeka
tel: +385 (0)51 324-420
fax: +385 (0)51 322-753
igor.sikanjic@safmarine.com
www.safmarine.com

SEAGO LINE
Fiorello La Guardia 13/3
51000 Rijeka
tel: +385 (0)51 324-414
fax: +385 (0)51 322-753
jelena.perovic@seagoline.com
www.seagoline.com

MERIDIANA POMORSKA AGENCIJA d.o.o.
Trpimirova 3, 51000 Rijeka
tel: +385 (0)51 320-314
fax: +385 (0)51 320-316
meridiana@ri.t-com.hr
www.meridiana-agency.com

PROFI TRANS (PTG) d.o.o.
Kukuljanovo b.b., 51227 Kukuljanovo
tel: +385 (0)51 503-342
fax: +385 (0)51 503-343
profi.trans@ri.t-com.hr
www.profitrans.hr/

SIMMOR d.o.o.
Milutina Baraca 19, 51000 Rijeka
tel: +385 (0)51 400 990
fax: +385 (0)51 400 991
si@simmormarine.com
www.simmormarine.com

TANKERKOMERC d.d.
A. K. Miošića 8 b, 51000 Rijeka
tel: +385 (0)51 373-047
fax: +385 (0)51 373-067
srecko.kukoc@tankerkomerc.hr
www.tankerkomerc.hr

TRADEWAYS d.o.o.
Trg Ivana Koblera 2, 51000 Rijeka
tel: +385 (0)51 312-121
fax: +385 (0)51 320-909
twd-mgt-rijeka@tradeways.hr

TRANSAGENT d.o.o.
Verdieva 6, 51000 Rijeka
tel: +385 (0)51 325-530
fax: +385 (0)51 322-260
transagent.rijeka@transagent.hr
www.transagent.hr

TRANSLOG d.o.o.
Zagrebačka 1/2, 51000 Rijeka
tel: +385 (0)51 317-555
fax: + 385 (0)51 317 507
agency@translog.hr

TRI MARE d.o.o.
Nikole cara 1/3, 51000 Rijeka
tel: +385 (0)51 324-971
fax: +385 (0)51 212-100
trimare@tri-mare.hr
www.tri-mare.hr

UDRUGA POMORSKIH AGENATA HRVATSKE ASSOCIATION OF SHIP BROKERS AND AGENTS OF CROATIA

Trg Ivana Koblera 2, 51000 Rijeka
tel: +385 (0)51 327-262
fax: +385 (0)51 215-357
info@asbac.hr
www.asbac.hr

GENERALNE INFORMACIJE GENERAL INFO

AUTOBUSNI KOLODVOR
BUS STATION
Žabica 1, 51000 Rijeka
tel: +385 (0)60/302-010, 660-360

ŽELJEZNIČKI KOLODVOR
RAILWAY STATION
Trg kralja Tomislava 1, 51000 Rijeka
tel: +385 (0)60/333-444, 213-333

JADROLINIJA
Riva 16, 51000 Rijeka
tel: +385 (0)51 666-111
fax: +385 (0)51 213-116

LUČKA KAPETANIJA
HARBOUR MASTER'S OFFICE
Senjsko pristanište 3, 51000 Rijeka
tel: +385 (0)51 214-031
fax: +385 (0)51 214-113

CROATIA PILOT
Riječki lukobran bb, 51000 Rijeka
tel: +385 (0)51 213-748
fax: +385 (0)51 337-914

ZRAČNA LUKA RIJEKA
RIJEKA AIRPORT
Otok Krk / Island of Krk
tel: +385 (0)51 841-222
fax: +385 (0)51 842-032

CROATIA AIRLINES
Jelačićev trg 5, 51000 Rijeka
tel: +385 (0)51 330-207
fax: +385 (0)51 335-931



TURISTIČKI UREDI TOURIST OFFICES

TURISTIČKA ZAJEDNICA KVARNERA
KVARNER COUNTY TOURISM OFFICE
Nikole Tesle 2, 51410 Opatija
tel: +385 (0)51 272-988, 272-665
fax: +385 (0)51 272-909
kvarner@kvarner.hr
www.kvarner.hr
wap.kvarner.hr

TZ GRADA RIJEKE
RIJEKA TOURIST BOARD
Užarska 14, 51000 Rijeka
tel: +385 (0)51 315-710
fax: +385 (0)51 315-720
tz-rijeka@ri.t-com.hr
www.tz-rijeka.hr

Turistički informativni centar
Tourist Information Centre
Korzo 14, 51000 Rijeka
tel: +385 (0)51 335 882
e-mail: tic@tz-rijeka.hr

TZ GRADA OPATIJE
OPATIJA TOURIST BOARD
Vladimira Nazora 3 (p.p. 54)
51410 Opatija
tel: +385 (0)51 271-710
fax: +385 (0)51 271-699
info@opatija-tourism.hr
www.opatija-tourism.hr

TZ GRADA CRIKVENICE
CRIKVENICA TOURIST BOARD
Trg S. Radića 1c, 51260 Crikvenica
tel: +385 (0)51 241-051
tel/fax: +385 (0)51 241-867
info@tzg-crikvenice.hr
www.tzg-crikvenice.hr

HOTELI HOTELS

HOTEL AMBASADOR*****
F.Peršića 1, 51410 Opatija
tel: +385 (0)51 743-333
fax: +385 (0)51 743-444
ambasador@liburnia.hr
www.liburnia.hr

HOTEL MILENIJ*****
M.Tita 109, 51410 Opatija
tel: +385 (0)51 202-000
fax: +385 (0)51 202-020
info@ugohoteli.hr
www.ugohoteli.hr

HOTEL MOZART*****
M.Tita 138, 51410 Opatija
tel: +385 (0)51 718-260
fax: +385 (0)51 271-739
info@hotel-mozart.hr
www.hotel-mozart.hr

GRAND HOTEL BONAVIA ****
Dolac 4, 51000 Rijeka
tel: +385 (0)51 357-100
fax: +385 (0)51 335-969
bonavia@bonavia.hr
www.bonavia.hr

HOTEL JADRAN ****
Šetalište XIII divizije 46
51000 Rijeka
tel: +385 (0)51 216-600
fax: +385 (0)51 216-458
jadran@jadran-hoteli.hr
www.jadran-hoteli.hr

HOTEL ADMIRAL****
M.Tita 139, 51410 Opatija
tel: +385 (0)51 271-533
fax: +385 (0)51 271-708
admiral@liburnia.hr
www.liburnia.hr

ASTORIA DESIGN Hotel****
M.Tita 174, 51410 Opatija
tel: +385 (0)51 706-350
fax: +385 (0)51 706-351
info@hotel-astoria.hr
www.hotel-astoria.hr

HOTEL BRISTOL****
M.Tita 108, 51410 Opatija
tel: +385 (0)51 706-300
fax: +385 (0)51 706-301
info@hotel-bristol.hr
www.hotel-bristol.hr

GRAND HOTEL ADRIATIC ****
M.Tita 200, 51410 Opatija
tel: +385 (0)51 719-000
fax: +385 (0)51 719-015
info@hotel-adriatic.hr
www.hotel-adriatic.hr
www.lifeaclass.net

**GRAND HOTEL
– 4 OPATIJSKA CVIJETA******
V.C.Emina 6, 51410 Opatija
tel: +385 (0)51 295-000
fax: +385 (0)51 278-021
info@milениjhoteli.hr
www.milениjhoteli.hr

HOTEL MIRAMAR****
I.Kaline 11, 51410 Opatija
tel: +385 (0)51 280-000
fax: +385 (0)51 280-028
info@hotel-miramamar.info
www.hotel-miramamar.info

SAVOY****
M.Tita 129, 51410 Opatija
tel: +385 (0)51 710-500
fax: +385 (0)51 272-680
info@hotel-savoy.hr
www.hotel-savoy.hr

HOTEL THERAPIA****
Braće Buchoffer 12, 51260 Crikvenica
tel: +385 (0)51 209-700
fax: +385 (0)51 785-072
therapia@therapia.hr
www.therapia.hr



