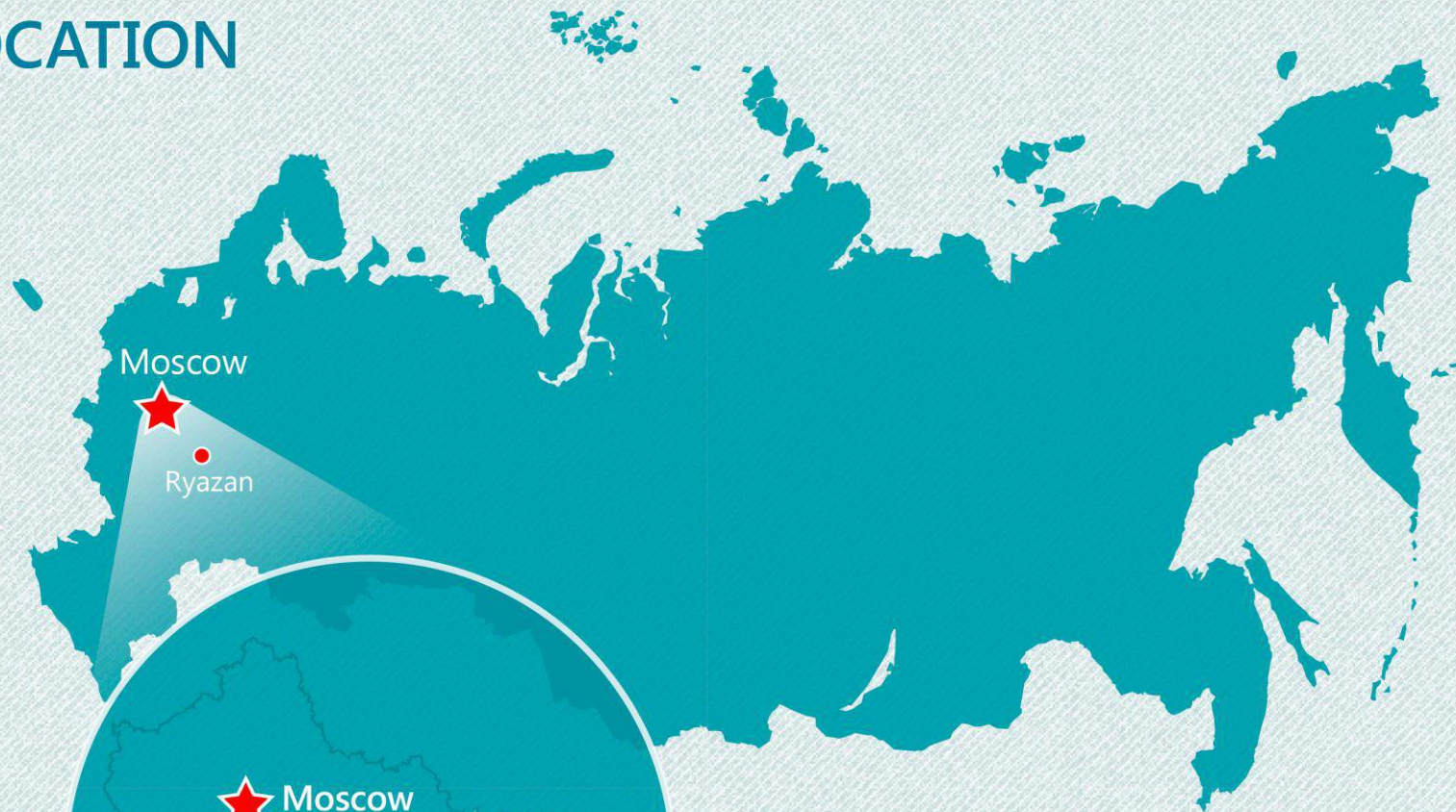




• Ryazan

## INVESTMENT POTENTIAL OF RYAZAN REGION

# LOCATION



— The area of the region **39 600 km<sup>2</sup>**



— Population **1 130 000 people**



— **40 000 000** potential consumers

# TRANSPORT INFRASTRUCTURE



 **3 federal highways**

**M-5** «Ural»

**M-6** «Caspian»

**P-132** «Kaluga–Tula–Ryazan»

 **2 railways**

Moscow–Ryazan–Ural

Moscow–Ryazan–Sochi



**Waterways**

Moscow–Ryazan–N. Novgorod

River port «Ryazan»

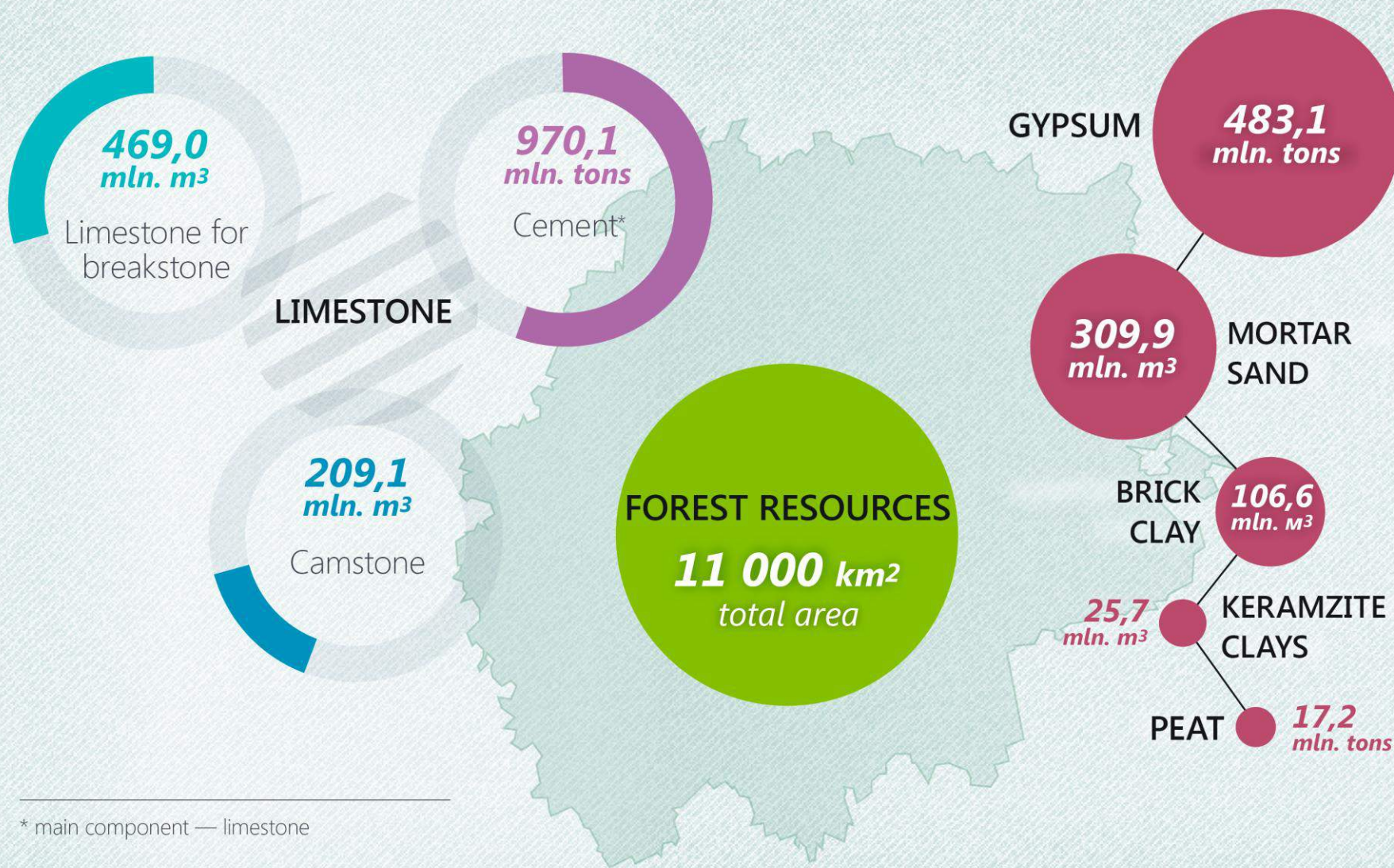
River port «Kasimov»



**Airport «Protasovo»**

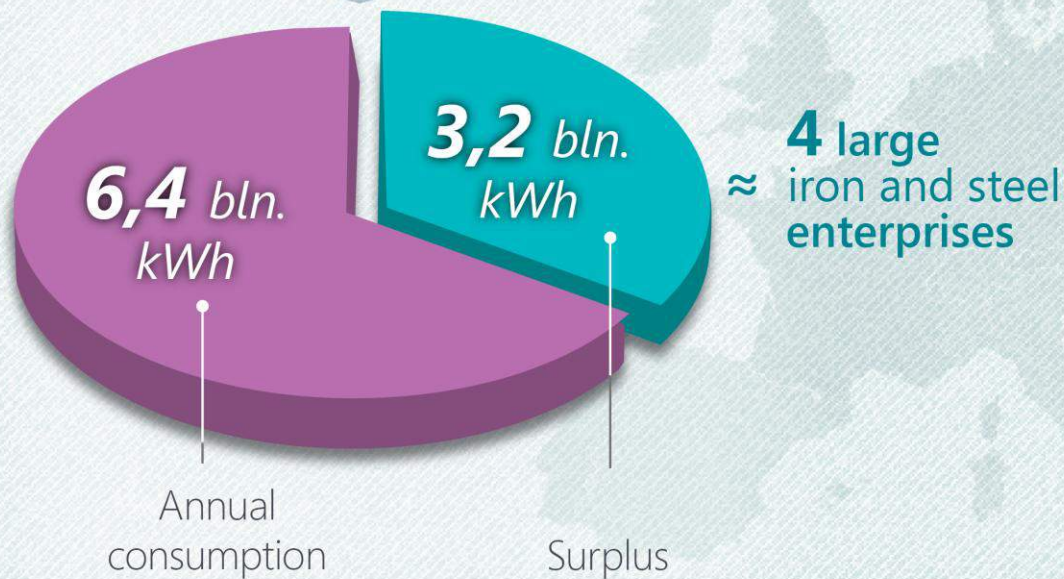
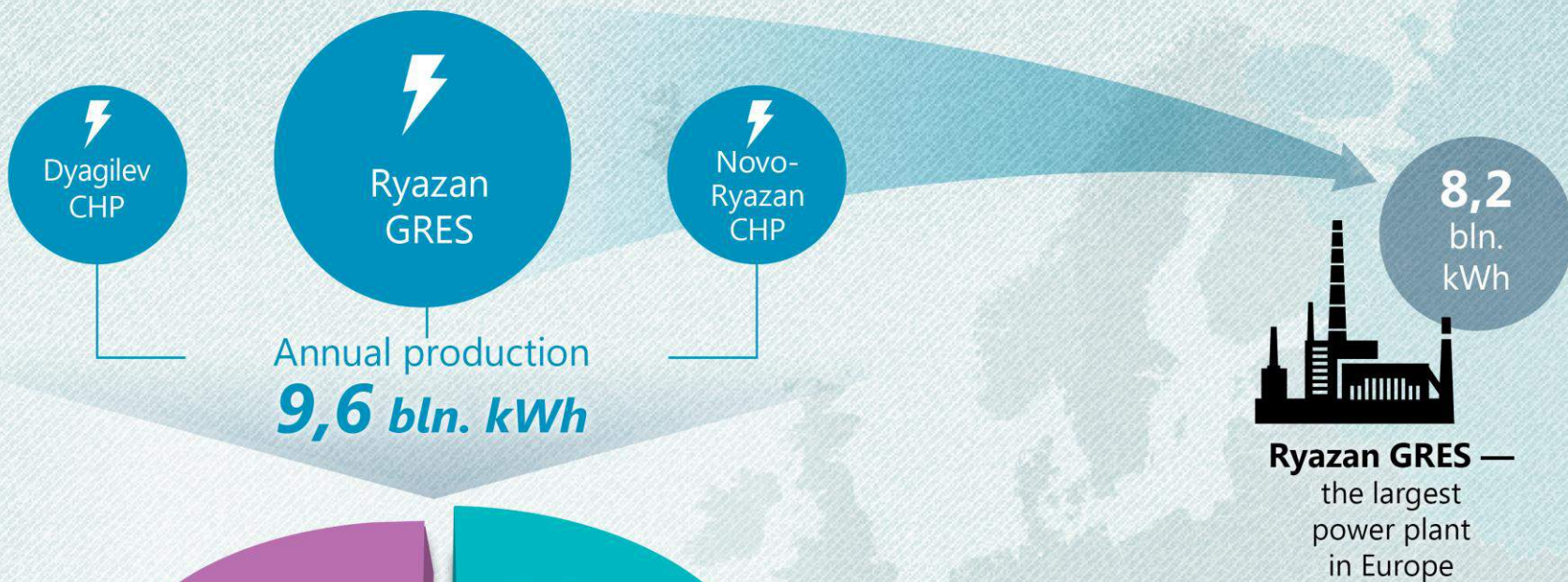
Project of the airport with cargo terminal

# NATURAL RESOURCES OF THE RYAZAN REGION



\* main component — limestone

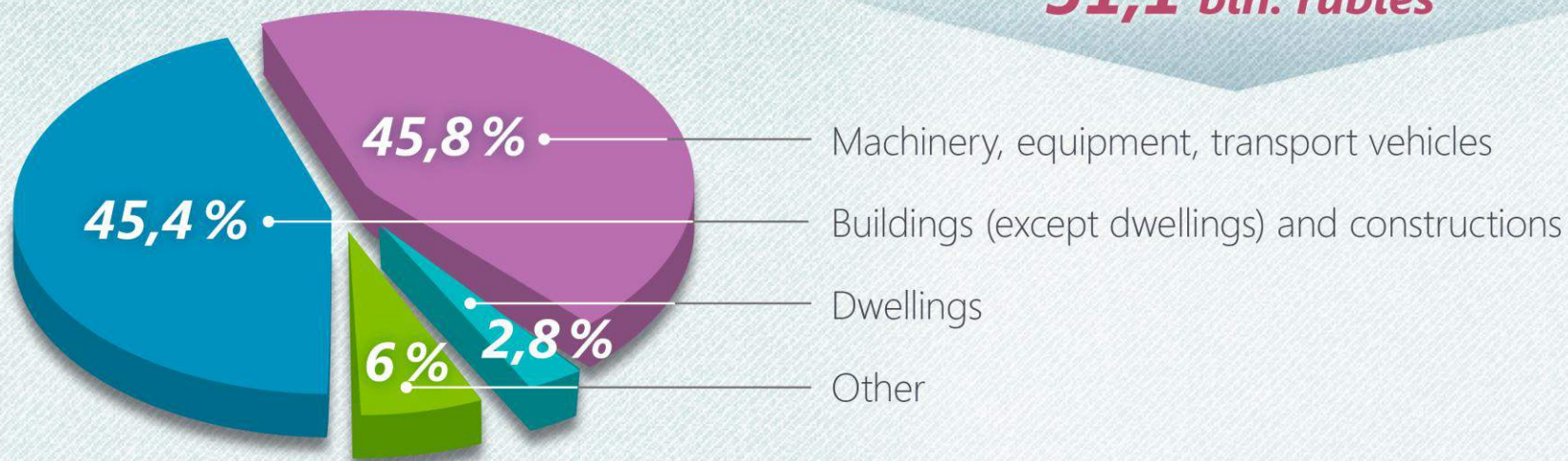
# POWER RESOURCES



# THE AMOUNT OF INVESTMENTS

FIXED CAPITAL INVESTMENTS

**51,1 bln. rubles**



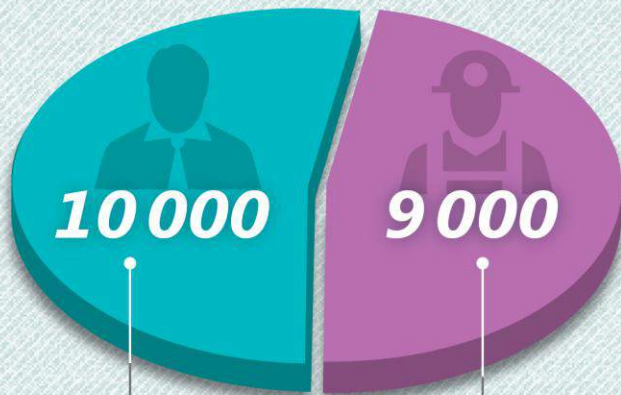
FIXED-CAPITAL INVESTMENTS DIVIDED BY TYPES OF ECONOMIC ACTIVITY, *bln. Rub.*



# LABOUR FORCE

Per year we train

**19 000** professionals



Higher  
education  
professionals

laboring  
men and  
workers



— Management and Economy



— Agriculture



— IT



— Law and Humanities



— Healthcare



— Industry and Construction

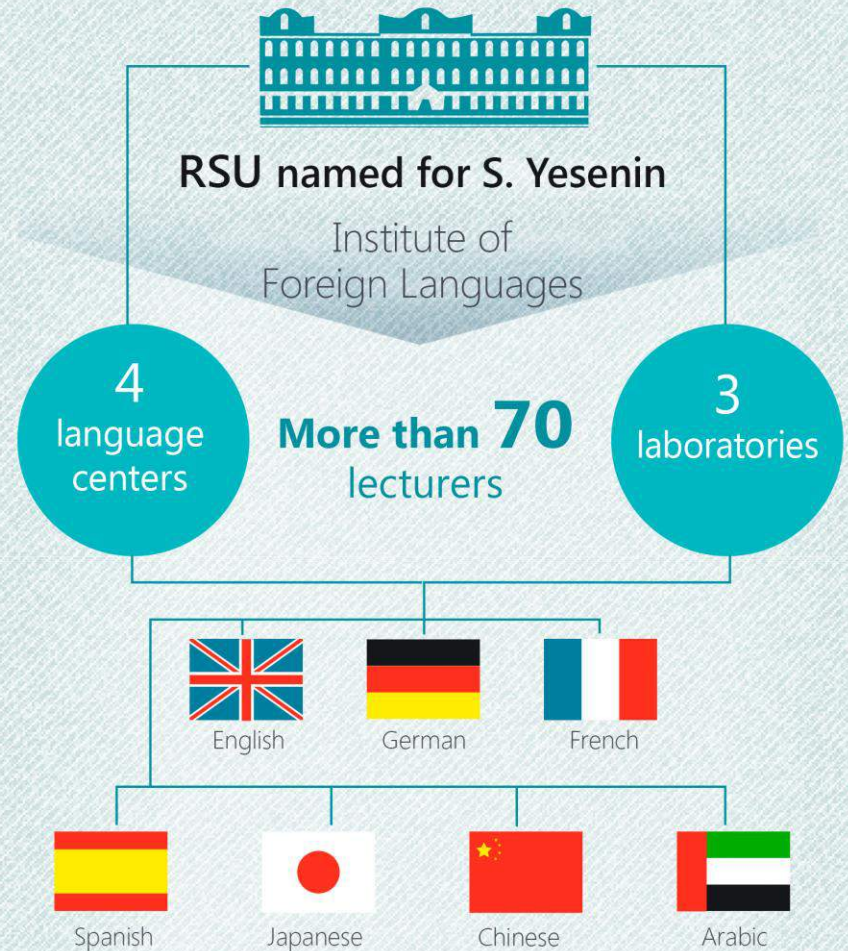
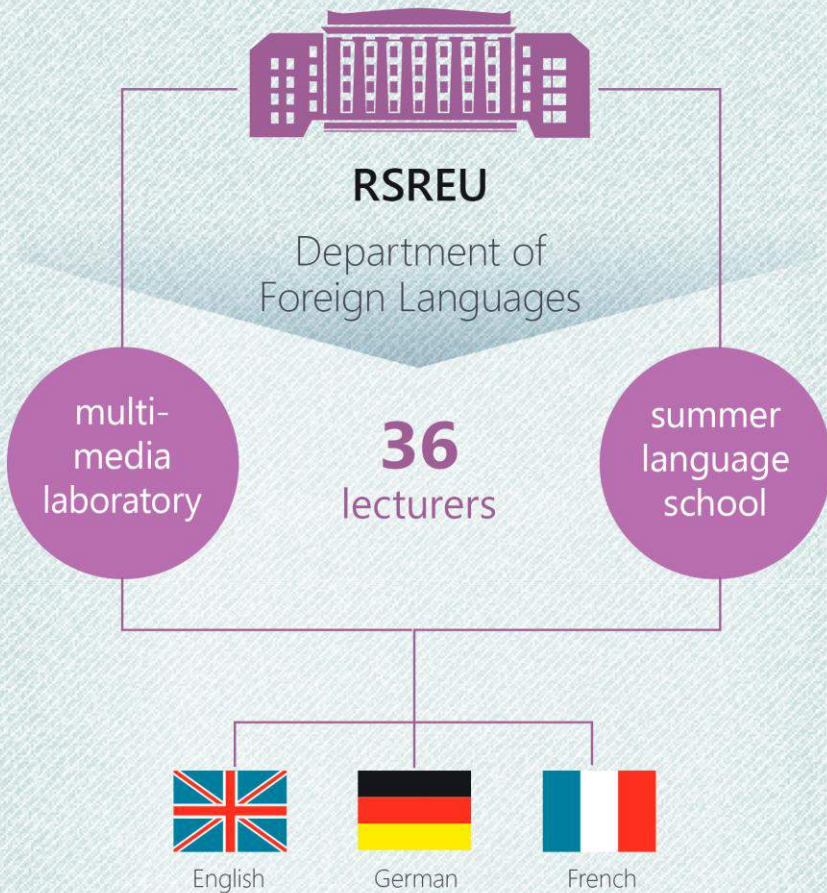


— Transport



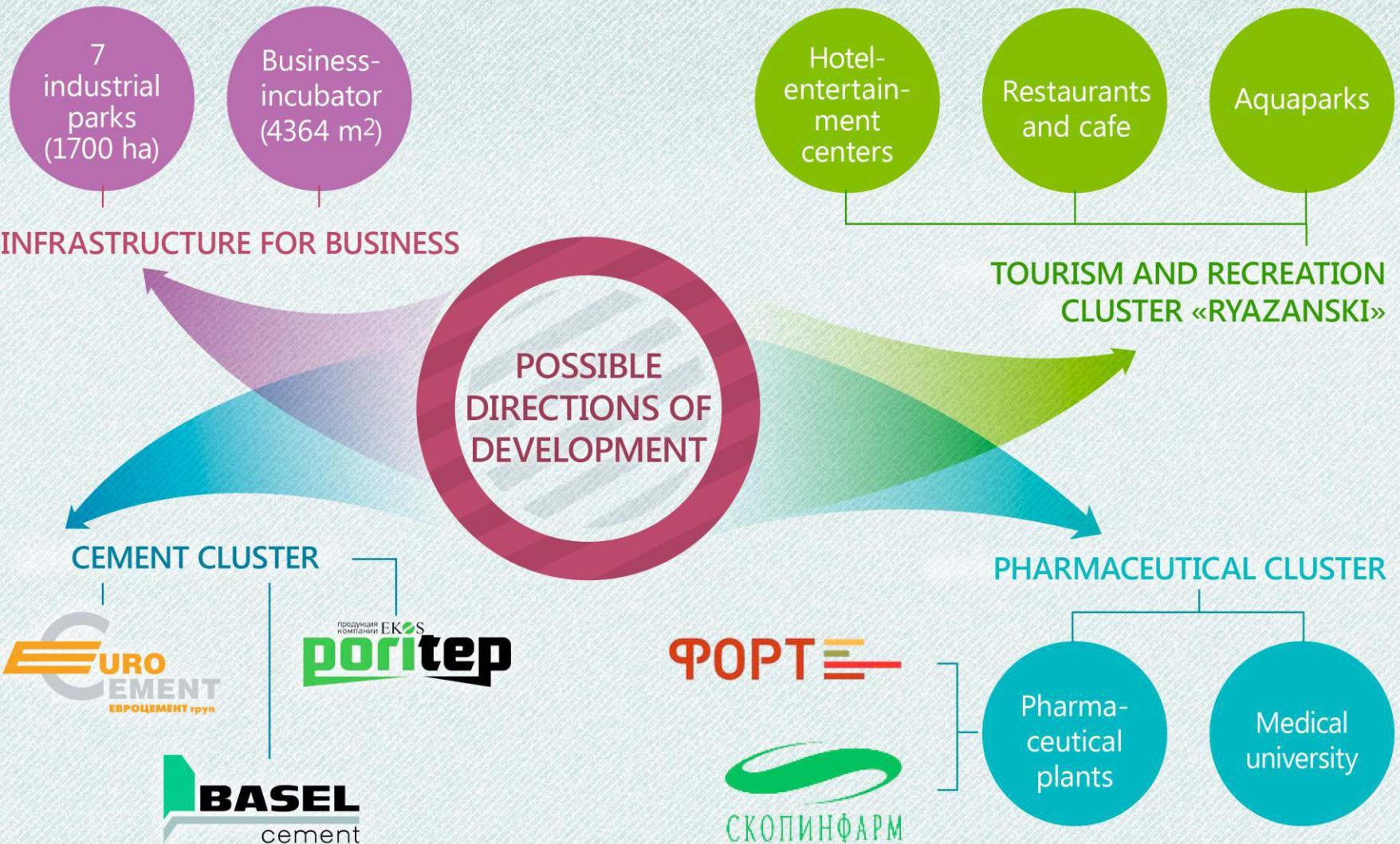
— Education and Culture

# TEACHING FOREIGN LANGUAGES IN THE RYAZAN REGION





# TERRITORIES FOR YOUR DEVELOPMENT



# INDUSTRIAL SITE IN THE PRONSK MUNICIPAL DISTRICT



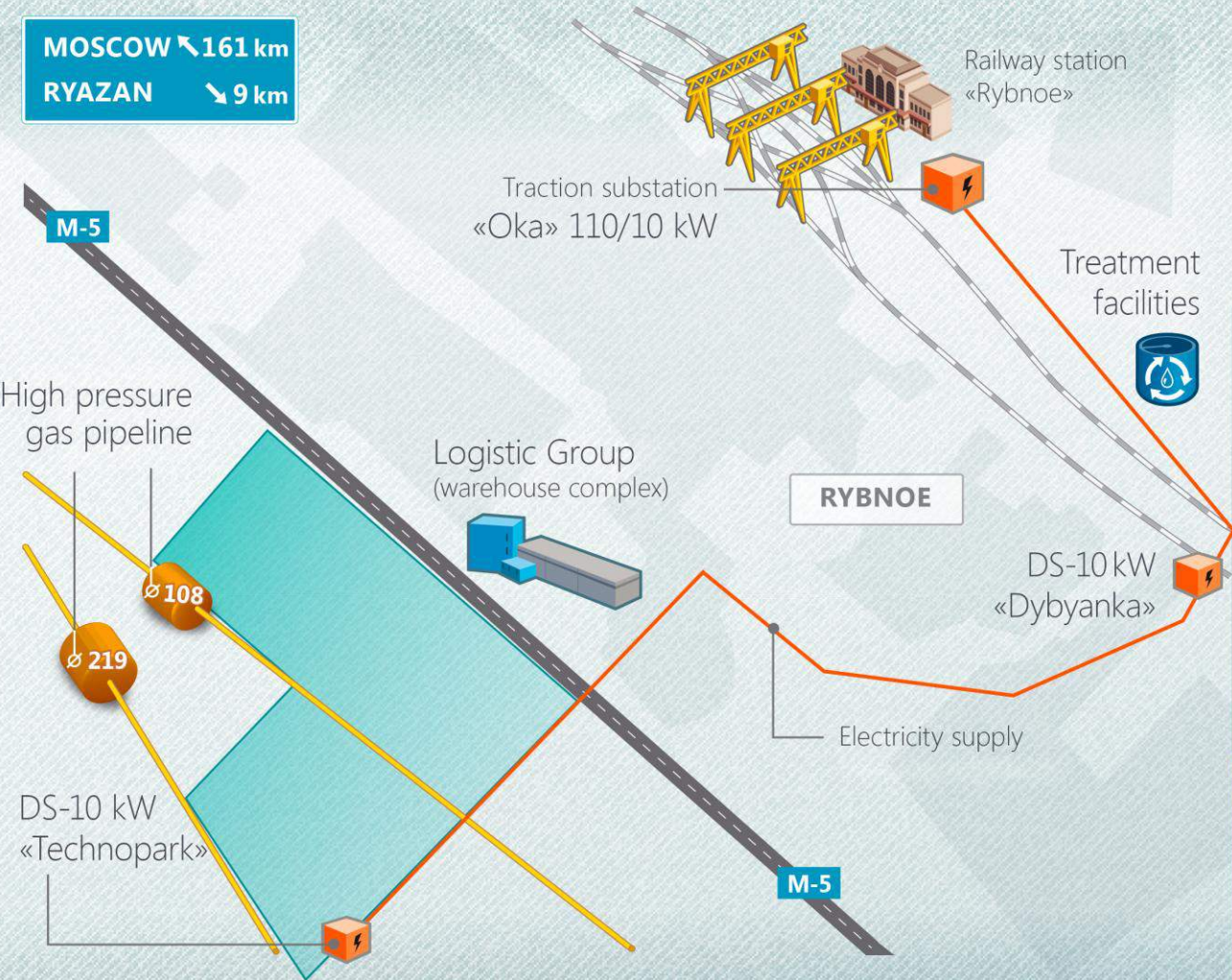
# INDUSTRIAL SITE IN VARSKIE VILLAGE








**Project support**  
**«RRCD»**  
(4912) 77-77-17  
office@rrcd.ru  
rrcd.ru

# INDUSTRIAL SITE «RYBNOE-1»

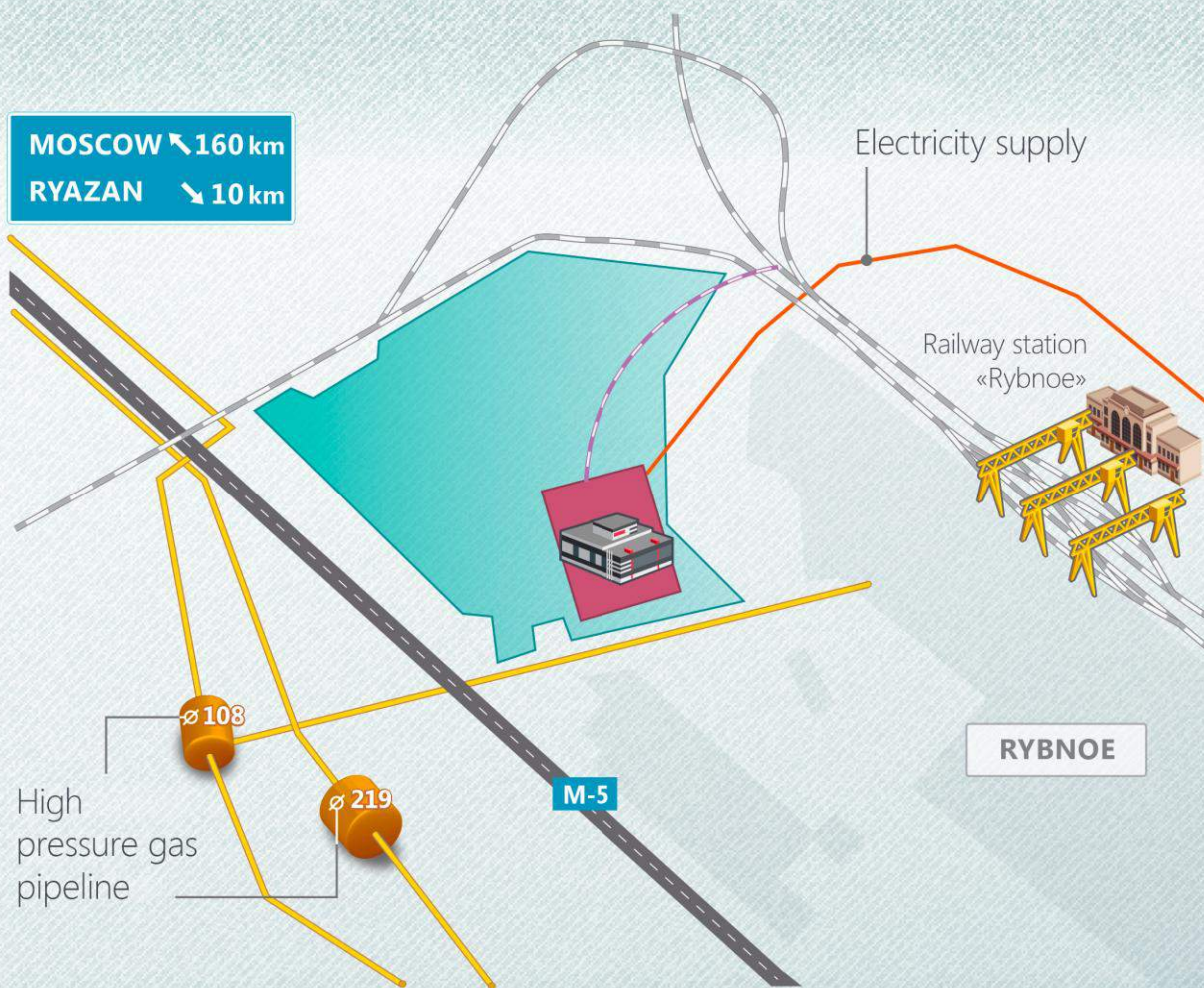
MOSCOW ↙ 161 km  
RYAZAN ↘ 9 km



-  — **Area 138 ha**
-  — 20,7 MW
-  — High pressure gas pipeline
-  — Construction of intake station is planned
-  — Construction of treatment facilities is planned

**Project support**  
**«RRCD»**  
(4912) 77-77-17  
office@rrcd.ru  
rrcd.ru

# INDUSTRIAL SITE «RYBNOE-2»



Area 103,47 ha,  
**free area 88,47 ha**  
private ownership



2,6 MW



High pressure  
gas pipeline



Construction of intake  
station is planned



Construction of treatment  
facilities is planned



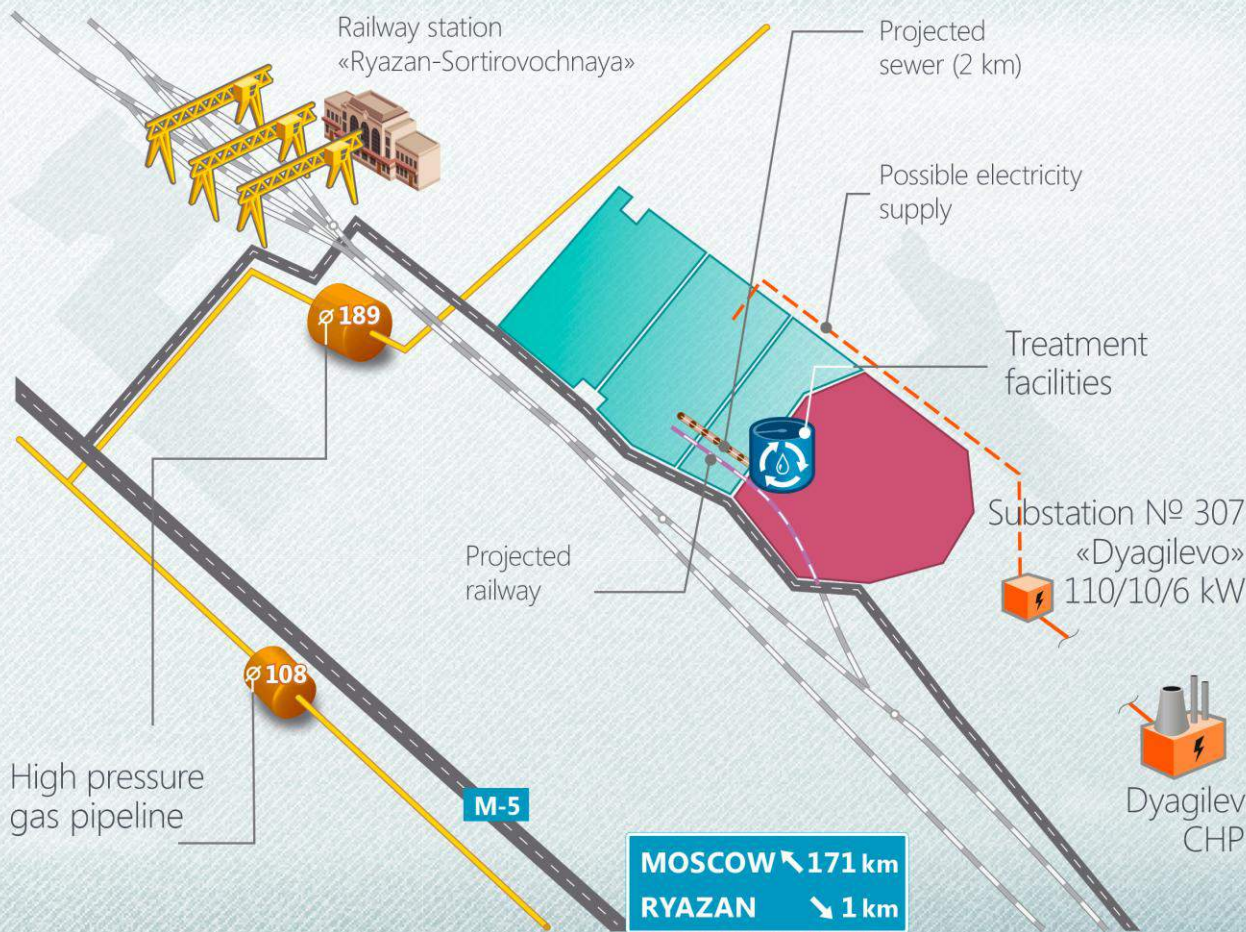
Resident:

**БЕРВЕЛ**  
ЗАВОД ВЫСОКОПРОЧНОГО КРЕПЕЖА

**Project support**  
**«RRCD»**

(4912) 77-77-17  
office@rrcd.ru  
rrcd.ru

# INDUSTRIAL PARK «GORODISHCHE»



-  — **Area 173,8 ha**, private ownership
-  — 10 MW
-  — 110K m<sup>3</sup> per hour
-  — 30 m<sup>3</sup> per hour
-  — External water canal
-  — 4 000 m<sup>3</sup> per day

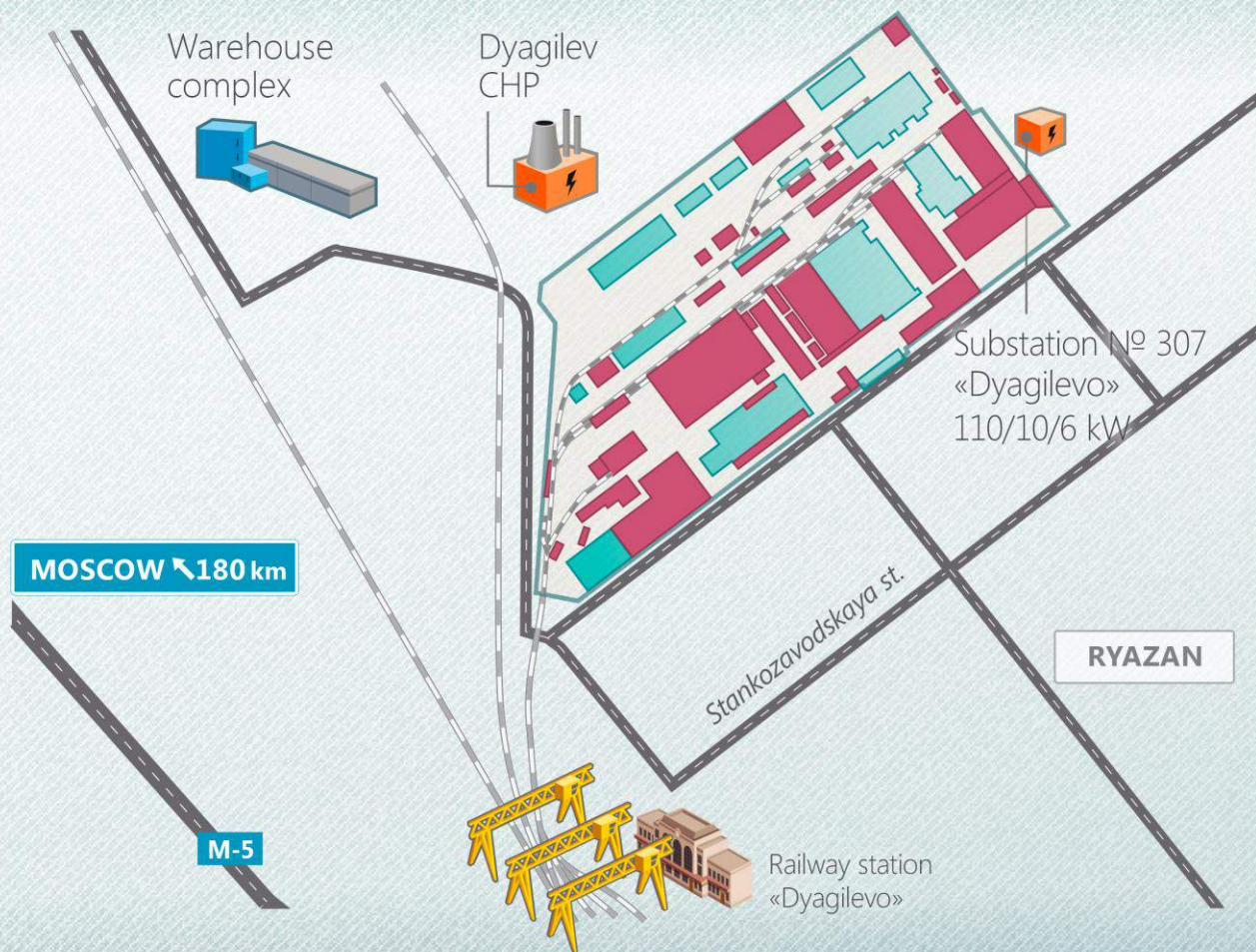
 — Resident:



**Operating company**  
**LLC «Safyan»**

(4912) 24-08-81, 30-65-76  
saphyan@leather.ru  
fpkinvest.ru

# INDUSTRIAL PARK «STANKOZAVODSKOY»



170 000 m<sup>2</sup> ind. premises,  
**free area 100 000 m<sup>2</sup>**,  
 private ownership for land  
 plot and buildings



— 25,9 MW



— 3 000 m<sup>3</sup> per hour



— 29,6 Gcal per hour



— 7,2 m<sup>3</sup> per hour



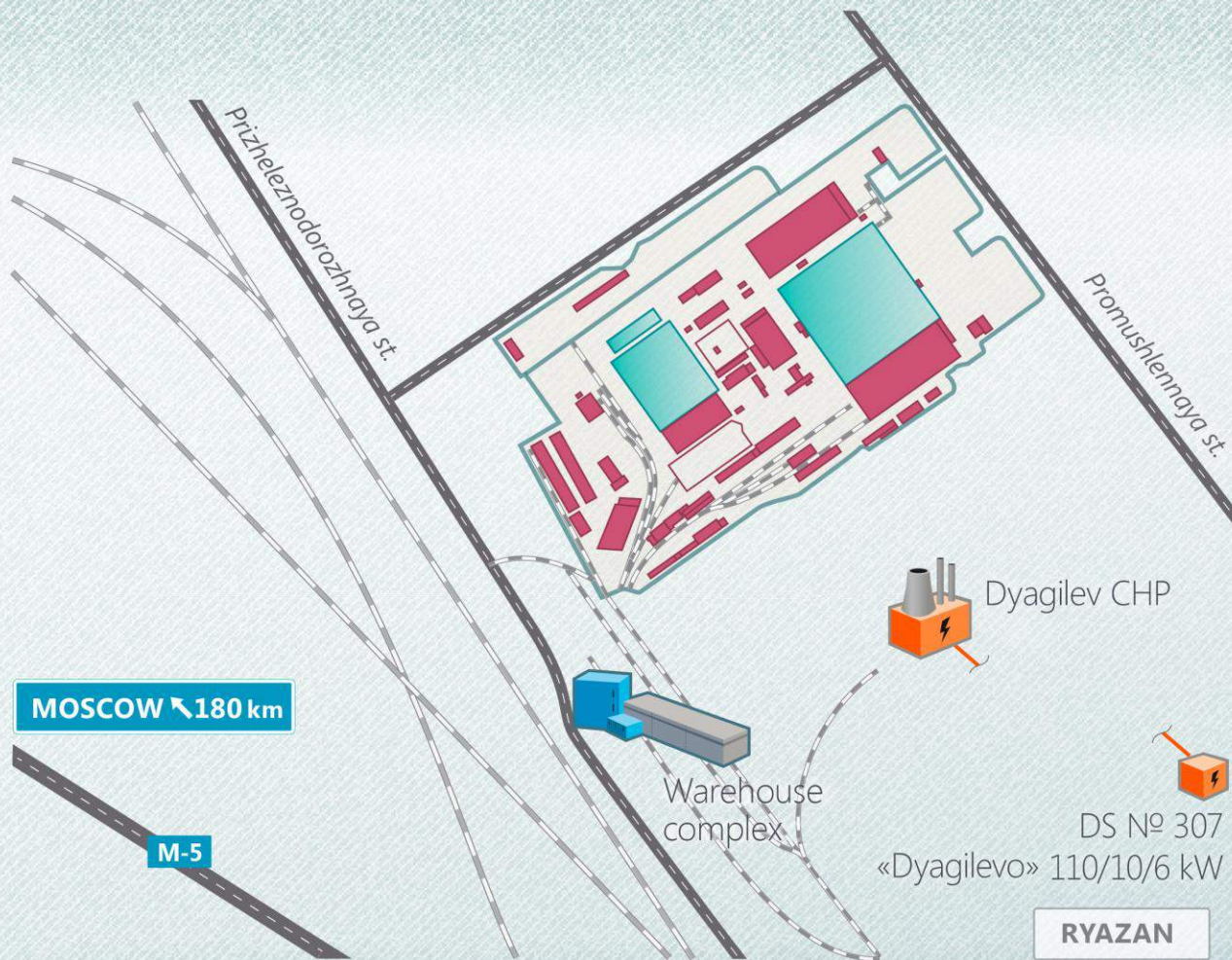
— Resident:  
 25 companies including




**Managing company**  
 «Liteishchik» LLC

(4912) 93-28-34  
 v.ugolnikov@rsz.ru  
 stanko-park.ru

# INDUSTRIAL SITE «KONDRATA»



-  — 140 000 m<sup>2</sup> ind. premises, **free area 87 400 m<sup>2</sup>**, private ownership for land plot and buildings
-  — 29 MW
-  — 3,4K m<sup>3</sup> per hour
-  — Own boiler
-  — 4 m<sup>3</sup> per hour
-  — Resident:  
200 small and medium enterprises

**Managing company**  
**«Kondrata» LLC**

(4912) 95-69-04, 95-69-99  
oip@admrzn.ru  
admrzn.ru



# FORMS AND AMMOUNT OF STATE SUPPORT

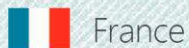
Amount of investment	Especially significant investment project	Priority investment project	Basic investment project
		no less than <b>1 bln. rubles</b>	no less than <b>150 mln. rubles</b>
Special conditions	Overall or partial financing at the expence of State (Public) corporations and companies in which participation in authorized capital of Russian Federation is more than 50%	Is being realized in prior areas of investment development:: <ul style="list-style-type: none"> <li>■ import substitution;</li> <li>■ production on the territory of a monocity;</li> <li>■ pharmaceutical production;</li> <li>■ agricultural production;</li> <li>■ production of vehicles;</li> <li>■ introduction of energy saving techonologies, etc.</li> </ul>	Is realized in any direction of investment development
Corporate profit tax rate reduction from 20%			
	<b>to 15,5%</b>	<b>to 16%</b>	<b>to 18%</b>
Corporate property tax reduction from 2,2%			
	<b>to 0%</b>	<b>to 0,6%</b>	<b>to 1,1%</b>
Transport tax exemption			
	✓	—	—
Reduction of rent on land sites owned by the Ryazan Region			
	<b>on 99%</b>	<b>on 50%</b>	<b>on 20%</b>
Provision of subsidies on the interest rates on loans compensation, leasing and connection to the power grids, gas pipelines, heat and water supplies			
	✓	✓	—
Reduction of Simplified Taxation System rate			
<b>from 6% to 1% on the taxation object «income»</b> <b>from 15% to 5% on the taxation object «income reduced by expenses»</b>			
State support			
For the period of the investment project but no more than 15 years For the period of modernization but no more than 5 years			

# OUR INVESTORS



USA

«Guardian Glass Ryazan»  
Glass production



France

«Air Liquide Ryazan»  
Power gas production



Italy

«Automotive Lighting»  
Automobile lighting technologies



Germany

«Mauser Group»  
Industrial package production



Russia

Corporation  
«TechnICOL»  
Waterproof materials



Germany

«Abicor Binzel»  
Welding engineering



Japan

«Tatsuno Rus»  
Equipment for refueling



Germany

«Fresenius Medical Care»  
Healthcare



Russia

Data-center  
IT



Russia

«EUROCEMENT Group»  
Constructional material



Germany

Hypermarket «Globus»  
Trade



Germany

Hypermarket «Obi»  
Trade



Germany

Hypermarket «Selgros»  
Trade



Germany

Hypermarket «Metro»  
Trade



France

«Leroy Merlin»  
Trade

# CONTACT US



Government of  
the Ryazan Region

+7 (4912) 29-04-04

[ryazangov.ru](http://ryazangov.ru)



Ministry of Economic  
Development and Trade of  
the Ryazan Region

+7 (4912) 21-58-34

[mineconom.ryazangov.ru](http://mineconom.ryazangov.ru)  
[invest-r.ru](http://invest-r.ru)

post62@mineconom.rzn.ru



КОРПОРАЦИЯ  
РАЗВИТИЯ  
РЯЗАНСКОЙ  
ОБЛАСТИ

Ryazan Region  
Corporation of Development

+7 (4912) 77-77-17

[rrcd.ru](http://rrcd.ru)

office@rrcd.ru

THANK YOU FOR YOUR ATTENTION!

